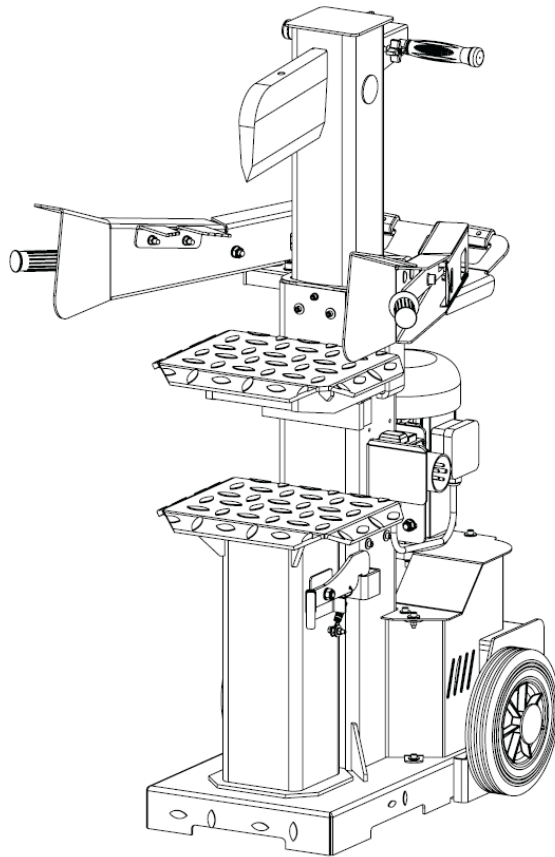


VARI®



FOR YOUR SAFETY

**READ AND UNDERSTAND THE ENTIRE MANUAL
BEFORE OPERATING THE MACHINE**

MODEL: VARI 10 TON SUPER FORCE
SERIAL NUMBER:

Both model number and serial number may be found on the main label.
You should record both of them in a safe place for future use.

Save This Manual for Future Reference

VERTICAL LOG SPLITTER
Instructions for use (Original instructions for use) 2011

SAFETY WARNINGS & CAUTIONS

SAFETY WARNINGS & INSTRUCTIONS

SYMBOL AFFIXED TO THE MACHINE

• UNDERSTAND YOUR LOG SPLITTER

Read and understand the owner's manual and labels affixed to the log splitter. Learn its application and limitations as well as the specific potential hazards peculiar to it.



• DRUGS, ALCOHOL AND MEDICATION

Do not operate the log splitter while under the influence of drugs, alcohol or any medication that could affect your ability to use it properly.

• AVOID DANGEROUS CONDITIONS

Always operate your log splitter on dry, solid, level ground. Never operate your log splitter on slippery, wet, muddy or icy surfaces. The location you choose should be free from any tall grass, brush or other interferences. There should be plenty of room for handling and help the operator stay alert. Keep your work area clean and well lighted. Cluttered areas invite injuries. To avoid tripping, do not leave tools, logs or other components lying around the work area. Do not use the log splitter in wet or damp areas or expose it to rain. Do not use it in areas where fumes from paint, solvents or flammable liquids pose a potential hazard.



• INSPECT YOUR LOG SPLITTER

Check your log splitter before turning it on. Keep guards in place and in working order. Form a habit of checking to see that keys and adjusting wrenches are removed from tool area before turning it on. Replace damaged, missing or failed parts before using it. Make sure all nuts, bolts, screws, hydraulic fittings, hose clamps, etc. are securely tightened. Always check the oil level in the hydraulic oil tank. Never operate your log splitter when it is in need of repair or is in poor mechanical condition.



• DRESS PROPERLY

Do not wear loose clothing, gloves, neckties or jewellery (rings, wrist watches). They can be caught in moving parts. Protective, electrically non-conductive gloves and non-skid footwear are recommended when working. Wear protective hair covering to contain long hair, preventing it from getting caught in machinery.



- **PROTECT YOUR EYES AND FACE**

Any log splitter may throw foreign objects into the eyes. This can cause permanent eye damage. Always wear safety goggles. Everyday eyeglasses have only impact resistant lenses. They are not safety glasses.



- **EXTENSION CORDS**

Improper use of extension cords may cause inefficient operation of the log splitter, which can result in overheating. Be sure the extension cord is not longer than 10 m and its section is not less than 2.5 mm² to allow sufficient current flow to the motor. Avoid use of free and inadequately insulated connections. Connections must be made with protected material suitable for outdoor use.

- **AVOID ELECTRICAL SHOCK**

Check that the electric circuit is adequately protected and that it corresponds with the power, voltage and frequency of the motor. Check that there is a ground connection, and a regulation differential switch upstream. Ground the log splitter. Prevent body contact with grounded surfaces: pipes, radiators, ranges, and refrigerator enclosures. Never open the switch / plug box. Should this be necessary, contact a qualified electrician. Make sure your fingers do not touch the plugs metal prongs when plugging or unplugging the log splitter.

- **PREVENT FIRES**

Do not smoke or have open flames when operating or refilling the log splitter. Never operate the log splitter near a flame or candle. Oil is flammable and can explode.



- **KEEP BYSTANDERS AWAY**

Allow only one person to load and operate the log splitter. Always keep bystanders, including visitors, children and pets away from the work area, especially when the log splitter is under operation. Only the operator should stand near the machine and only within the safe operating area prescribed in this manual. Never use another people to help you with freeing jammed log. No one under the age of 16 should be allowed to operate the log splitter. Any individual under the age of 18 should have the necessary training, skills to perform the functions properly and safely and should always be under the supervision of adult.



- **INSPECT YOUR LOG**

Never attempt to split logs containing nails, wire or debris. Always make sure that both ends of the log you are splitting are cut as square as possible. This will prevent the log from sliding out of position while under pressure. Branches must be cut off the trunk.

- **DON'T OVERREACH**

Keep proper footing and balance at all times. Never stand on log splitter. Serious injury could occur if the tool is tipped or if the cutting tool is unintentionally contacted. Do not store anything above or near the log splitter where anyone might stand on the tool to reach it.

- **AVOID INJURY FROM UNEXPECTED ACCIDENT**

Do not straddle or reach across the splitting area when operating the log splitter. Never pile logs to be split in a manner that will cause you to reach across the log splitter. Only use your hands to operate the control levers. Never use your foot, knee, a rope or any other extension device. Always pay full attention to the movement of the wedge ram. Never attempt to load your log splitter while the ram is in motion. Keep hands out of the way of all moving parts. Never try to split two logs on top of each other. One of them might fly up and hit you.



- **PROTECT YOUR HANDS**

When the ram of the log splitter is in the return mode, keep your hands off the machine. The log splitter is designed to automatically stop when the cylinder is full retracted. Keep your hands away from splits and cracks which open in the log. They may close suddenly and crush or amputate your hands. Do not remove jammed logs with your hands.



- **DON'T FORCE TOOL**

It will do a better and safer job at its design rate. Don't use log splitter for a purpose for which it was not intended. Do not, under any circumstances, alter your log splitter. This equipment was designed and engineered to be used in accordance with the operating instructions. Altering the equipment, or using the equipment in such a way as to circumvent its design capabilities and capacities, could result in serious or fatal injury and will void the warranty. Never try to split logs larger than those indicated in the specifications table. This could be dangerous and might damage the machine.

- **NEVER LEAVE TOOL RUNNING UNATTENDED**

Don't leave tool until it has come to a complete stop.

- **DISCONNECT POWER**

Unplug when not in use, before making adjustments, changing parts, cleaning or working on the log splitter. Consult technical manual before servicing.



- **PROTECT THE ENVIRONMENT**

Take used oil to an authorized collection point or follow the stipulations in the country where the log splitter is used. Do not discharge into drains, soil or water.



- **MAINTAIN YOUR LOG SPLITTER WITH CARE**

Always clean the unit after each use. Keep the log splitter clean for best and safest performance. Follow instructions for lubricating. Inspect all hydraulic seals, hoses and couplers for leaks prior to use. Control levers and power switch must be kept clean, dry and free from oil and grease at all times.

- **MAKE THE WORKSHOP CHILDPROOF**

Lock the shop. Store the log splitter away from children and others not qualified to use it.

TABLE OF CONTENTS

SAFETY WARNINGS & CAUTIONS	2
TABLE OF CONTENTS.....	5
APPLICATION CONDITIONS	6
SPECIFICATIONS.....	6
ELECTRICAL REQUIREMENTS.....	6
CONTENTS OF THE SHIPPING CONTAINER.....	7
SET UP AND PREPARATION FOR OPERATION.....	7
DELIVERING LOG SPLITTER TO WORK SITE	9
LOG SPLITTER OPERATION.....	9
REPLACING HYDRAULIC OIL	12
SHARPENING WEDGE	12
TROUBLESHOOTING.....	13
WIRING DIAGRAM PLUMBING DIAGRAM.....	13
PART LIST	14
DISPOSAL OF PACKAGING AND MACHINE AFTER THE END OF SERVICE LIFE	16
INSTRUCTIONS FOR ORDERING SPARE PARTS.....	16
ADDRESS OF THE MANUFACTURER	17
ADDRESS OF THE IMPORTER AND DISTRIBUTOR.....	17

APPLICATION CONDITIONS

This log splitter is designed for operating under ambient temperatures between +5°C and +40°C and for installation at altitudes not more than 1000 m above M.S.L. The surrounding humidity should be less than 50 % at 40°C. It can be stored or transported under ambient temperatures between . 25°C and +55°C.

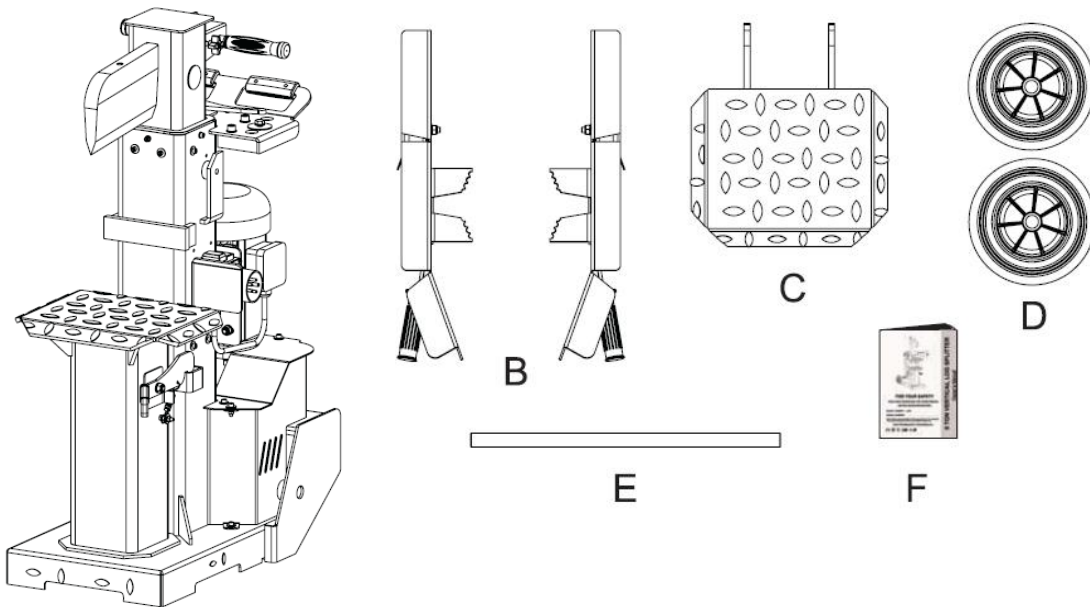
SPECIFICATIONS

Model	C102	
Trade Name	VARI 10 TON SUPER FORCE	
Motor	400 V ~ 50 Hz 3800 W IP54	
Log Size Capacity	Diameter	12 . 40 cm
	Length	59 cm / 85 cm / 135 cm
Maximum Force	10 t	
Hydraulic Pressure	19.5 MPa	
Hydraulic Oil Capacity	7 l	
Ram Travel	550 mm	
Forward Speed	4.5 cm/sec.	
Retract Speed	12.5 cm/sec.	
Noise Level	68.4 dBA under no load; 74.5 dBA under full load	
Weight	200 kg	

ELECTRICAL REQUIREMENTS

With 3 phase 400 Volt / 50Hz motor, the log splitter should be connected to standard 400V \pm 10 % / 50Hz \pm 1 Hz electrical supply which has protection devices of under-voltage, over-voltage, over-current as well as a residual current device (RCD) with maximum residual current rated at 0.03 A. The mains connection and extension cable must have 5 wires = 3P + N + PE (3/N/PE). The mains connection must have maximum 16A fuse. Electrical connection rubber cables must comply with EN60245, which is always marked with symbol H 07 RN. Cables should be identified, as it is a legal requirement.

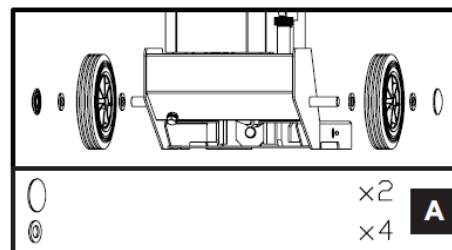
CONTENTS OF THE SHIPPING CONTAINER



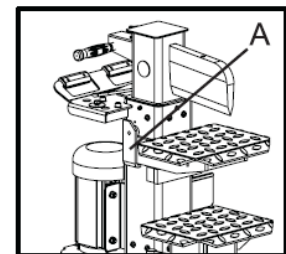
- A. Log Splitter Frame 1 set
- B. Control Lever and Guard Assy 2 sets
- C. Removable Support Table 1 pc
- D. Wheel 2 pcs
- E. Wheel Axle 1 pc
- F. Owner's Manual 1 pc

SET UP AND PREPARATION FOR OPERATION

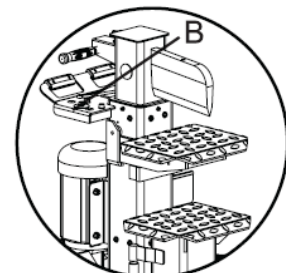
1. Mount the wheels with wheel axle to the base. Ensure a washer to be on each side of the wheel. Tighten the nuts.



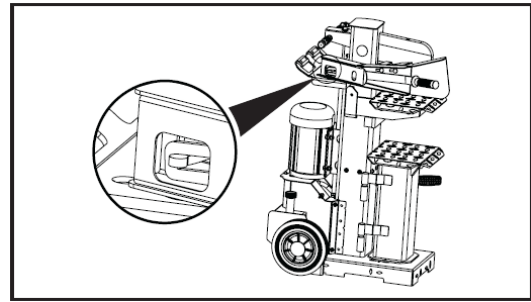
2. Insert the support table in bracket (A). Lock the support table firmly.



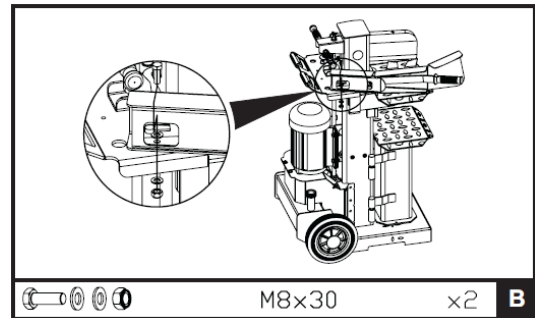
3. Remove the bolts, washers and nuts from the bracket (B). Leave big washer in position.



- Slide control lever and guard assy over the link rod.

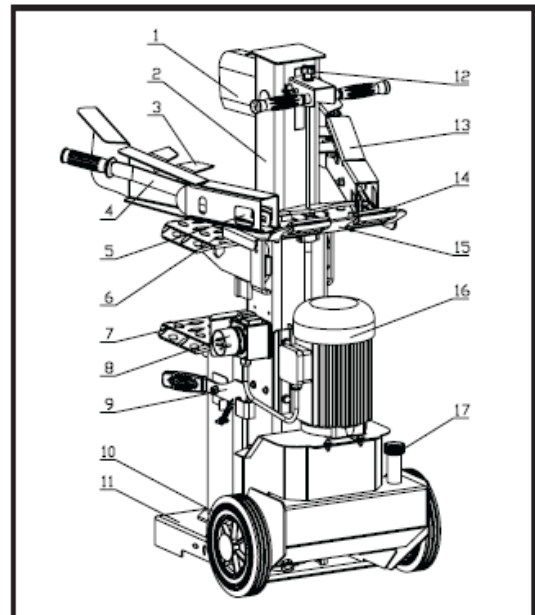


- Bolt the control lever and guard assy in position with bolts, washers and nuts.



- Familiarize yourself with the controls and features of this log splitter in the illustrations.

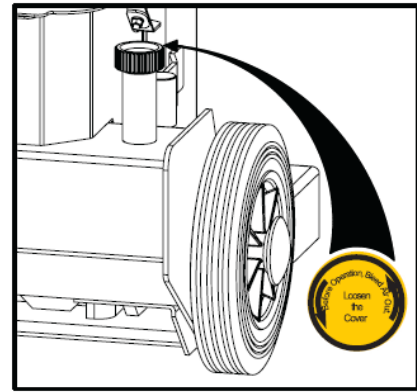
- Split Wedge
- Ram
- Adjustable Log Holder
- Control Lever
- Slot
- Support Table
- Rotary Support Table
- Plug & Switch
- Table Lock Down Hook
- Wheels
- Base
- Ram Travel Adjusting Rod
- Control Lever Guard
- Transport Handle
- Top Motor Shield
- Motor & Pump
- Oil Tank Cover / Air Bleeder



Bleed the air out of the hydraulic system before starting the log splitter. The cover of the hydraulic oil tank should be loosened by some rotations until air can go in and out of the oil tank smoothly.

Airflow thru the oil tank filler should be detectable during the operations.

Before moving the log splitter, make sure the cover of the oil tank is tightened to avoid oil leaking from this point.



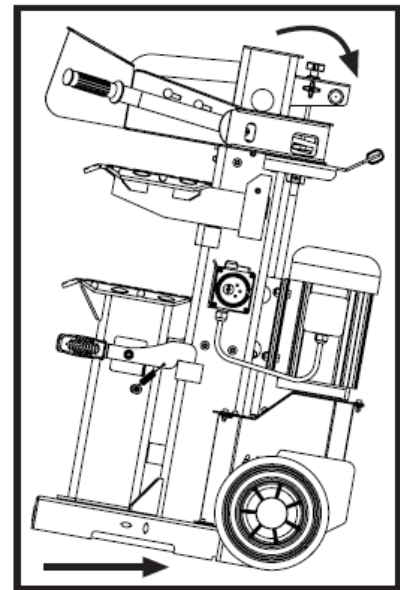
FAILED TO LOOSEN THE OIL TANK COVER WILL KEEP THE SEALED AIR IN HYDRAULIC SYSTEM BEING COMPRESSED AFTER BEING DECOMPRESSED. SUCH CONTINUOUS AIR COMPRESSION AND DECOMPRESSION WILL BLOW OUT THE SEALS OF THE HYDRAULIC SYSTEM AND CAUSE PERMANT DAMAGE TO THE LOG SPLITTER.

DELIVERING LOG SPLITTER TO WORK SITE

The log splitter is equipped with 2 wheels for minor moving. To move the log splitter to the work site, grip the handle to tilt the log splitter slightly after making sure the oil tank cover is tightened.



If using a crane, lay hoist sling around the housing. Never try to lift the log splitter at the Handle.

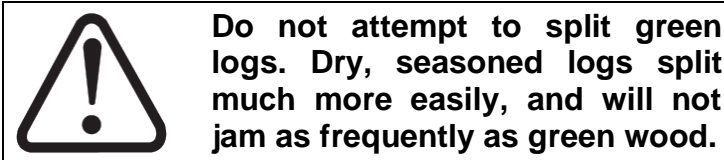


LOG SPLITTER OPERATION

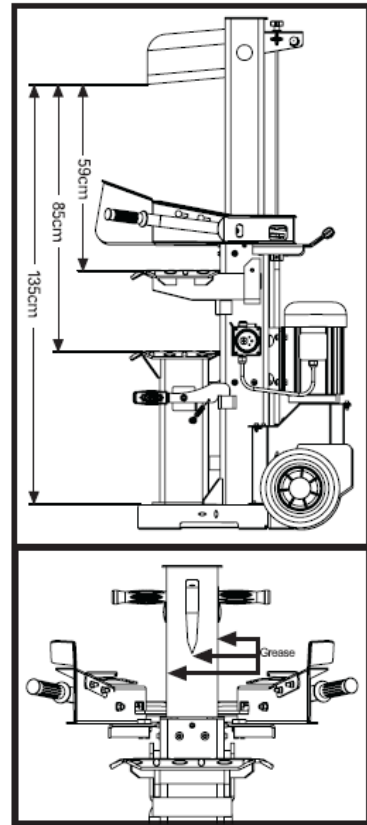
1. Plan your work site. Work safely and save effort by planning your work beforehand. Have your logs positioned where they can be easily reached. Have a site located to stack the split wood or load it onto a nearby truck or another carrier.

2. Prepare the logs for splitting. This splitter accommodates logs up to 135 cm in length. With 3 support table positions for splitting for 59 cm, 85 cm and 135 cm in

length, set the support table in position nearest the log length, and secure the support table with the locking hook.



3. Applying a thin coat of grease to the surfaces of the ram before operation will lengthen the durability of the ram.

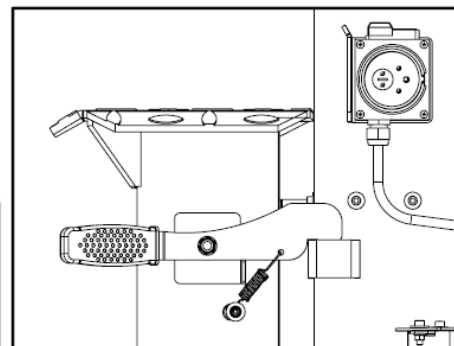
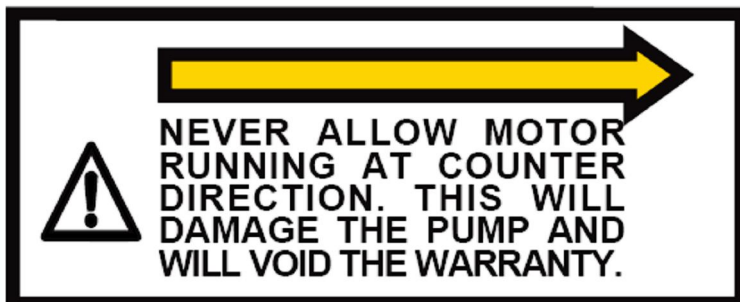


4. Route the power cord. Route the cord from the power source to the splitter in a way that safeguards against tripping on the cord or the cord becoming damaged during the work session. Protect the power cord from impacts, pulling or corrosive materials.

5. Open the Air Bleed. Loosen the oil tank cover a few turns whenever the splitter is being used. Retighten this cover when you finish.

6. Make sure the direction of motor rotation is correct. Turn the motor on; the wedge ram should rise to the highest position automatically. If the wedge ram is already at the highest position when the motor starts, grip both control levers and lower them, the wedge ram should start to move downward.

If no ram motion is detected after the motor starts, power off the motor immediately to change motor polarity by turning the pole switching device inside the plug with a screwdriver.



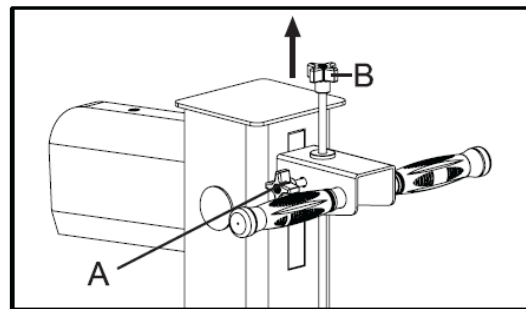
7. While operating under extremely low temperature, keep the log splitter running under no load for 15 minutes to preheat the hydraulic oil.

8. Before initial operation, check to be sure the two-handed operation is properly functioning by following steps:

- (1) Lower both control levers, splitting wedge lowers to approx. 5 cm above the take above the highest table position.
- (2) Release either of the levers; splitting wedge should remain in the original position.
- (3) Release both levers; the ram should rise to the highest position automatically.

9. To set wedge ram stroke, take the following steps:

- (1) Move splitting wedge to desired position. The upper position of the ram wedge travel should be about 3-5 cm over the logs to be split.
- (2) Release a control lever or switch off motor.
- (3) Release the Knob (A). Raise Adjusting Rod (B) until Adjusting Rod (B) is started to be stopped by the spring inside. Tighten the Knob (A).
- (4) Release both control levers or switch on motor.
- (5) Check upper position of splitting wedge.

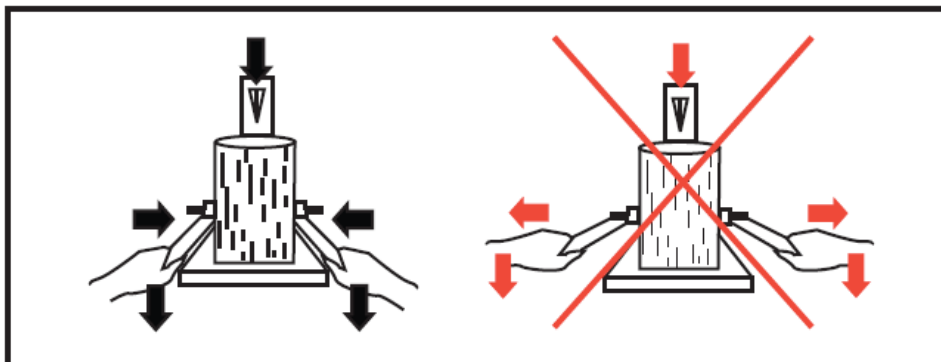


10. Place log onto splitter. Place the log onto the support table vertically and sitting flat on the support table. Be sure the wedge and support table will contact the log squarely on the ends. Never attempt to split a log at an angle.



Break log in the direction of its growing grain. Do not place log across the log splitter for splitting. It may be dangerous and may seriously damage the machine.

11. Hold the log with clamping brackets closely in the control lever guards. Lower levers to start the splitting. Releasing either lever stops the motion of the splitting wedge. Releasing both handles returns the splitting wedge to the upper position.



12. Stack as you work. This will provide a safer work area, by keeping it uncluttered, and avoid the danger of tripping, or damaging the power cord.



Accumulated split wood and wood chips can create a hazardous work environment. Never continue to work in a cluttered work area which may cause you to slip, trip or fall.

REPLACING HYDRAULIC OIL

The hydraulic system is a closed system with oil tank, oil pump and control valve. Check oil level regularly with dipstick. Low oil levels can damage the oil pump. Oil Level should measure approx. 1 - 2 cm lower than the upper surface of the oil tank. The oil should be completely changed once a year.

- Make sure moving parts are stopped and the log splitter is unplugged.
- Make sure that no dirt or debris finds its way into the oil tank.
- Collect used oil and responsibly recycle.
- Following an oil change, activate the log splitter a few times without actually splitting.

Following hydraulic oils or equivalent are recommend for the log splitter's hydraulic transmission system:

SHELL Tellus 22

MOBIL DTE 11

ARAL Vitam GF 22

BP Energol HLP-HM 22

SHARPENING WEDGE

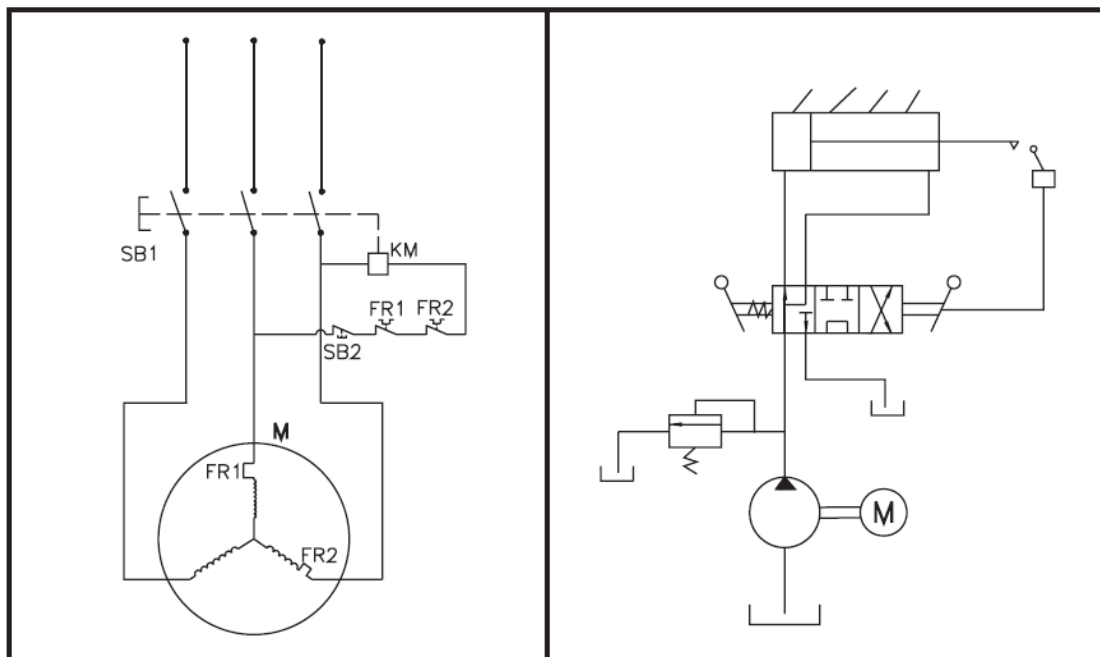
This log splitter is equipped with reinforced splitting wedge which blade is specially treated. After long periods of operation, and when required, sharpen the wedge using a fine-toothed file removing any burrs or flat spots on the edge.

TROUBLESHOOTING

PROBLEM	PROBABLE CAUSE	REMEDY SUGGESTED
Motor does not start.	No current in the socket.	Check mains fuse.
	Electrical extension line defective.	Unplug, check and replace.
	Incorrect connection line 3~400 V.	5-line connection at 1.0 mm diameter.
	Switch or capacitor defective.	Have checked by electrician.
Incorrect motor rotation direction.	Incorrect connection.	Change pole-switching device in the plug with a screwdriver.
		Reverse polarity by electrician.
Log Splitter does not work while motor running.	Valve is not opened owing to the connection parts loosening.	Check and tighten the parts.
	Control Levers or Connection parts bent.	Repair the bent parts.
	Lower hydraulic oil level.	Check and refill hydraulic oil.
Log Splitter works with abnormal vibration and noise.	Lower hydraulic oil level.	Check and refill hydraulic oil.

WIRING DIAGRAM

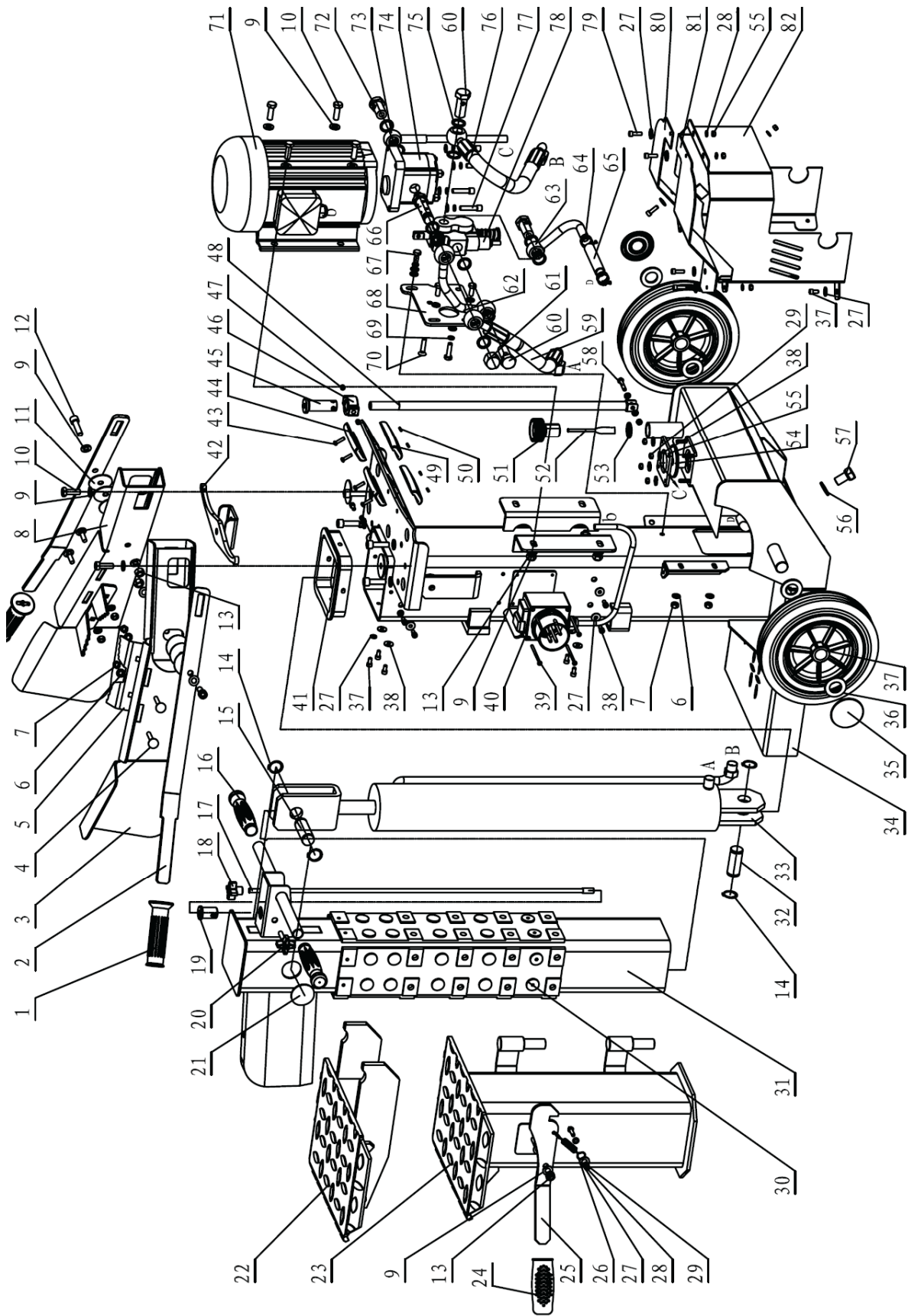
PLUMBING DIAGRAM



Attention!

Through poor conditions of the electrical mains, shortly voltage drops can appear when starting the equipment. This can influence other equipment (e.g. blinking of a lamp). If the mains impedance $Z_{max} < 0.448$ ohm, such disturbances are not expected. (In case of need, you may contact your local supply authority for further information.)

PART LIST



Pos.	Part No.	Name	Pcs	Pos.	Part No.	Name	Pcs
1	201701	Handle Cover	2	42	201742	Adjustive Lever	4
2	201702	Manipulative Handle	3	43	201743	Screw M5x18	2
3	201703	Right Armguard Hold assembly	1	44	201744	Above Handle Cover	1
4	201704	Quadrate Dia Bolt M8x25	4	45	201745	Tense Pipe Nut	1
5	201705	Clamp Timber Claw	2	46	201746	Fixed Set	2
6	201706	Washer 8	11	47	201747	Screw M8x8	1
7	201707	Locknut M8	6	48	201748	Tense Pipe	2
8	201708	Left Armguard Hold assembly	1	49	201749	Nether Handle Cover	4
9	201709	Washer 10	25	50	201750	Thin Nut M5	1
10	201710	Bolt M10x30	3	51	201751	Oleaginous Cover	1
11	201711	Handle Washer	6	52	201752	Oil Ruler	1
12	201712	Inner Hexangular Screw M10x30	2	53	201753	O-Ring 22.4x3.55	1
13	201713	Locknut M10	7	54	201754	Close Oil Plank	1
14	201714	Snap Washer-Shaft	4	55	201755	Close Oil Washer	1
15	201715	Above Axis	1	56	201756	Washer Groupware 16	1
16	201716	Handle Cover	2	57	201757	Bolt 16x25	1
17	201717	Tense Pole	1	58	201758	Bolt M6x30	1
18	201718	Four Star Nut	1	59	201759	Working Oil Pipe	1
19	201719	Tense Pole Clamp Cover	2	60	201760	Oil Stem	3
20	201720	Four Star Model Handle M8x35	1	61	201761	Three Passage Nut Cap	1
21	201721	Knife Rest Pipe Circinal Stem	2	62	201762	Difference Oil Pipe	1
22	201722	Log Support	1	63	201763	Annular Oil Pipe	1
23	201723	Revolving Log Support	1	64	201764	Doble Steel Wire Hoop 20-25	2
24	201724	Flat Handle Cover	1	65	201765	Oil return pipe	1
25	201725	Lock Handle	1	66	201766	Long three Passage	1
26	201726	Dreich Spring	1	67	201767	Bolt M8x20	3
27	201727	Big Washer 6	22	68	201768	Valve Seat	1
28	201728	Washer 6	19	69	201769	Spring Washer 16	6
29	201729	Locknut M6	11	70	201770	Screw M8x30	1
30	201730	Slip Plank	4	71	201771	Motor	1
31	201731	Knife Rest Pipe Assembly	1	72	201772	Oil Stem	1
32	201732	Nether Axis	1	73	201773	Epispastic Oil Pipe	1
33	201733	Oily Vat	1	74	201774	Gear Pump	1
34	201734	Machine Shelf	1	75	201775	Washer Groupware 20	11
35	201735	Wheel Cover	2	76	201776	Above Travel Oil Pipe	1
36	201736	Washer	4	77	201777	Inner Hexangular Screw M8x35	4
37	201737	Wheel	2	78	201778	Valve	1
38	201738	Inner Hexangular Screw M6x12	11	79	201779	Inner Hexangular Screw M6x20	5
39	201739	Screw M4x60	1	80	201780	Left Jacket Plank	1
40	201740	Switch KOA7	1	81	201781	Right Jacket Plank	1
41	201741	Quadrate Slip Cover	1	82	201782	Pump Jacket	1

DISPOSAL OF PACKAGING AND MACHINE AFTER THE END OF SERVICE LIFE

After unpacking the machine, you are obliged to provide for the disposal of packaging material with taking into account the use of secondary raw materials according to the legislation valid in your country and with respect to the decrees of local town or municipal authorities.

The following procedure is recommended for machine disposal after the end of its service life:

1. Dismount all parts from the machine that can still be used.
2. Dismount plastic machine parts and parts made of non-ferrous metals. The dismantled machine remainder and the dismantled parts are to be disposed according to the legislation valid in your country and with respect to the decrees of local town or municipal authorities.
3. Regarding waste from the electrical device, use the opportunity of **return buy-out** in the shop, where you purchased the device (**points 1 and 2 are not valid in this case**).
4. The machine is in accordance with the RoHS Directive (2002/95/EC, 2002/96/EC, 2003/108/EC).
5. The product is in accordance with the requirements of the above-mentioned EC Directive regarding the quantities of forbidden dangerous substances.



This pictograph means that the product was introduced on the market after 13th September 2005 and shall not be disposed to a waste container or a dustbin.

INSTRUCTIONS FOR ORDERING SPARE PARTS

The following data are to be used for an easier identification when ordering the spare parts:

1. Machine type, engine type, machine serial number and year of manufacture;
2. Ordering number given by manufacturer and its name in the part list;
3. Number of ordered pieces separately for each item;
4. Precise address, telephone number, fax number or e-mail address;
5. Should you be uncertain about the correct identification of the component, send the damaged component either to the nearest service shop or directly to the manufacturer;
6. All components should be ordered in the nearest service shop or at your dealer's.

In the case of any confusions concerning the spare parts or technical issues, the VARI a.s. commercial, customer-service or technical departments are prepared to answer all your inquiries.

ADDRESS OF THE MANUFACTURER

TIYA International Co., Ltd., B12B, Shenyue Centre, 9 Shandong Road, Qingdao,
P.R.China

ADDRESS OF THE IMPORTER AND DISTRIBUTOR

VARI,a.s.	phone:	(+420) 325 607 111
Opolanska 350	fax:	(+420) 325 607 264
Libice nad Cidlinou		(+420) 325 637 550
CZECH REPUBLIC	e-mail:	vari@vari.cz
289 07	internet:	http://www.vari.cz/

EC DECLARATION OF CONFORMITY

according to Act No. 22/1997 Gaz.
(as amended)

Importer:

VARI,a.s. , Opolanská 350, 289 07 Libice nad Cidlinou, Czech Republic

Registration No.: 00660574 , VAT No.: CZ00660574 . Registered in the Company Register at Municipal Court of Prague on 29 January 1991 Section B, Insert 499.

issue the following statement at their own responsibility:

Description of the electrical device:

Trade mark	Name	Type	Serial nos.
VARI	Log splitter	VARI 10 TON SUPER FORCE	000001-999999
Input	3800W/400V	Weight	200 kg
Pressure force	10 tons	Log length	up to 1350 mm

The **VARI 10 TON SUPER FORCE** (model C102) log splitter is intended for simple splitting of wood logs. A ram pushes the log on a sharp wedge which breaks the wood log. This log splitter is intended for logs with a diameter of up to 400 mm. The machine drive is electro hydraulic.

Regulations according to which the conformity was assessed:

NV No. 17/2003 Gaz. (2006/95/EC), NV No. 616/2006 Gaz. (2004/108/EC), NV No. 176/2008 Gaz. (2006/42/EC)

(all Decrees of the Government /NV/ and directives as amended)

Authorized person which made the measurements:

TÜV Rheinland / CCIC (Qingdao) Co., Ltd., 6F, No. 2 Bldg., No. 175 Zhuzhou Road, Qingdao 266101, P.R. China
Test reports: 17701396015, 17702884001

Authorized person which issued the certificates:

TÜV Rheinland Product Safety GmbH ó Am Grauen Stein ó D-51105 Cologne, Germany
Certificates: AN501700660001, AM501700630001, AE501547080001, S501700840001

Harmonised technical standards and technical specifications used:

EN60204-1:2006, EN609-1:1999+A2, EN55014-1:2006,
EN55014-2:1997+A1, EN61000-3-2:2006, EN61000-3-11:2000

Last two digits of the year when the product was marked with CE: 06

Technical documentation file No. in which the product compliance with the regulations is assessed: **STD/003/2011**

We declare that: This machine, as defined with the above-mentioned data, complies with the basic requirements of the Government Decree (NV) and technical regulations and is safe under conditions of usual or by the manufacturer specified use. Furthermore precautions have been made to guarantee conformity of all products introduced on the market with the technical documentation and requirements of the technical regulations. The machine is safe under conditions of usual or specified use.

Place of issue of the declaration of conformity: Libice nad Cidlinou Date: 23.2.2011

Name, surname and function of the person authorized to sign this EC Declaration of Conformity:

Ji í BELINGER, Director General (CEO) and Chairman of the Board of Directors VARI,a.s.

Signature:



Stamp:

VARI® - Konstrukce
Opolanská 350
289 07 Libice nad Cidlinou
DIČ: CZ00660574

LETTER OF GUARANTEE

To be completed by importer

Name of product	Log splitter
Model	VARI 10 TON SUPER FORCE
Serial number	í .
Engine serial number	í .
Warranty (months)	í í í í í í í í í í í í í 24 í í í í ..í í í í í í í í ...
Output control	í .

The above product was passed over to the purchaser without any defects including the appropriate commercial and technical documentation and accessories. The purchaser was duly informed about the principles of sound operation and technical maintenance of the product.

To be completed by seller

Name of purchaser	í .
Address of purchaser	í .
Purchaser's signature	í .
Place of sale	í .
Date of sale	í .

Seller's stamp and signature í .

GUARANTEE CONDITIONS

Subject of warranty:

Warranty relates to the basic product including accessories supplied by VARI a.s.

Warranty period:

Warranty period for the product and accessories supplied with the product is 24 months from the date of sale to the purchaser. Time from the enforcement of liability for defects to the date when the user was obliged to take over the thing after the end of repair is not included in the warranty period.

The seller is obliged to give the purchaser a receipt confirming the date of the right exercise and repair and the time of its duration. If the product is exchanged, the warranty period starts running again from the date on which the purchaser took over the new product. If it is a whole assembly to be replaced, the warranty period starts running for the given assembly again from the date of product take-over.

Scope of manufacturer's liability:

Importer bears responsibility for the product having properties usual for the kind of the product in question and specified parameters for the whole period of warranty. The importer does not answer for defects of the product resulting from current wear or from the product's use for purposes other than specified.

Warranty extinction:

Claim of warranty extinguishes if:

- the product was not used and maintained as specified in the Operating manual, or it was damaged by any unauthorized operation by the user;
- the product was used in conditions or for purposes other than specified;
- the letter of guarantee for the product cannot be presented;
- data filled in the original product's documentation by the manufacturer, seller or service organization were intentionally falsified;
- a part of the product was replaced with a non-original component;
- the product was damaged or excessively worn due to improper maintenance;
- the product suffered an accident or was damaged by an Act of God;
- a modification was made to the product without manufacturer's consent;
- defects result from improper storage of the product;
- defects result from natural and common operating wear of the product;
- the product was connected to or operated with the equipment not approved by the manufacturer.

Complaints:

Complaints are applicable by purchasers at the seller's. When applying a complaint, the purchaser is obliged to submit a duly filled in letter of guarantee. Warranty repairs are carried out by sellers or by special service shops appointed by them.

Legislation:

Other purchaser/seller relations follow appropriate provisions of the legal regulations according to national legislation in the country of sale.

<p>Warranty inspection 1 Date:Person in charge:..... Service shop stamp and signature</p>	<p>Warranty inspection 1 Machine model..... Serial No.:.....</p>
<p>Warranty inspection 2 Date:.....Person in charge:..... Service shop stamp and signature</p>	<p>Warranty inspection 2 Machine model..... Serial No.:.....</p>
<p>1st Warranty service Date of complaint delivery:..... Date of repair:..... Brief description of the defect:..... Replaced parts (new warranty of ... months):..... Parts:..... Repair made by:</p>	<p>1st Warranty service Machine model..... Serial No.:..... Date:..... Repair made by:.. Stamp and signature..... </p>
<p>2nd Warranty service Date of complaint delivery:..... Date of repair:..... Brief description of the defect:..... Replaced parts (new warranty of ... months):..... Parts:..... Repair made by:</p>	<p>2nd Warranty service Machine model..... Serial No.:..... Date:..... Repair made by:..... Stamp and signature:..... </p>
<p>3rd Warranty service Date of complaint delivery:..... Date of repair:..... Brief description of the defect:..... Replaced parts (new warranty of ... months): Parts:..... Repair made by:</p>	<p>3rd Warranty service Machine model..... Serial No.:..... Date:..... Repair made by:..... Stamp and signature:..... </p>
<p>4th Warranty service Date of complaint delivery:..... Date of repair:..... Brief description of the defect:..... Replaced parts (new warranty of ... months):..... Parts:..... Repair made by:.....</p>	<p>4th Warranty service Machine model..... Serial No.:..... Date:..... Repair made by:..... Stamp and signature:..... </p>
<p>Service shop stamp and signature</p>	