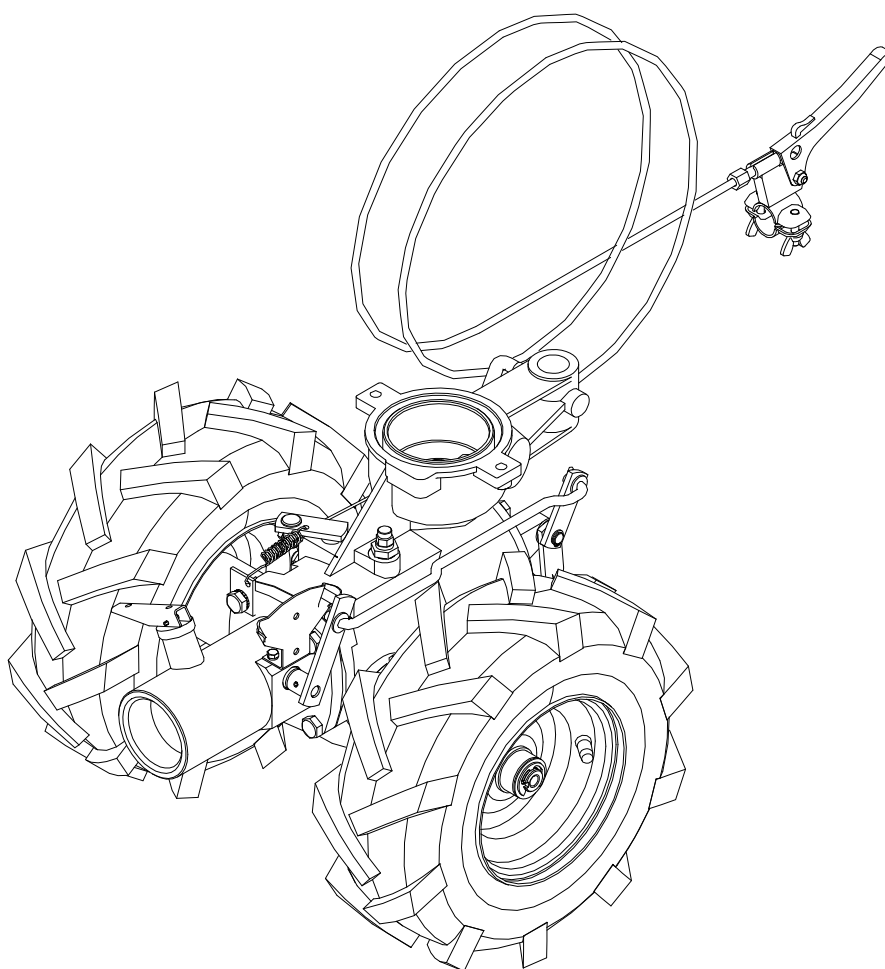


VARI®

Gearbox ***DSK-316.1PSVN/PVN***



Instructions for use

Guarantee for the gearbox applies only with the use of driving units and accessories supplied by VARI, a.s.

Contents

1	Basic information	3
2	Introduction	4
2.1	Basic warnings	4
3	Operation safety	5
3.1	Safety regulations	5
4	Use, technical specifications	6
4.1	Maschine use	6
4.2	Technical data	7
5	Instructions for use	8
5.1	Machine assembly	8
5.1.1	Driving unit installation onto gearboxes	8
5.1.2	Accessories installation	10
5.2	Working with the machine	10
5.2.1	Operating positions of the wheel drive clutch lever	10
5.2.2	Operating positions of the BVA-96 safety switch	11
5.2.3	Starting and driving the machine	11
5.2.4	Working with the gearbox	12
5.2.5	Switching the working implements drive	12
6	Maintenance, care and storage	13
6.1	Machine lubrication and adjustment	13
6.1.1	Replacement of oil in the gearbox	14
6.1.2	Gearbox lubrication	14
6.1.3	Adjusting the wheel drive clutch bowden cable	14
6.2	Washing and cleaning of the machine	15
6.3	Table of service operations	15
6.4	Machine storage	15
6.5	Disposal of packaging and machine after the end of service life	15
7	Instructions for ordering spare parts	16
8	Contact to the manufacturer	16
9	List of parts	17
10	Letter of Guarantee	24

1 Basic information.

I Ask your dealer to provide unpackaging of the machine and briefing.

Fill in the following data on your machine. The data are important for ordering spare parts.

It is advised to make a copy of this page with all data on the machine purchase for the case of loss or theft of the original record.

Type	(stick the bar code label here)
Serial No./Year of manufacture	
Date of delivery (sale)	
Supplier	
Address	
Phone/fax/e-mail/internet	

Your notes:

The manufacturer **reserves** the right of technical modifications and innovations not impacting the machine's function and operation safety. The changes need not be reflected in this Manual.

2 Introduction.

Dear customer and user!

Thank you for trusting our products. You have become owner of machine from a wide range of machines and attachments made by **VARI**, a.s. as a system of gardening, farming, small agricultural and communal technology.

The **DSK-316.1PSVN** and **DSK-316.1PVN** gearboxes follow the previous generation of very popular gearboxes: DSK-316.1PSA/DSK-316.1PA and DSK-316.1PSZ, from which it uses the accessories drive switching. The **DSK-316.1PSVN** and **DSK-316.1PVN** gearboxes, connected with an appropriate driving unit, are used for driving accessories for works such as culm plants and grass cutting, mulching, snow clearing, sweeping of streets and other areas. The **DSK-316.1PSVN** and **DSK-316.1PVN** gearboxes have become popular because of their very effortless control.

Please read the Instructions for use carefully. If you follow them properly, you will have our product performing a reliable work for you for years.

2.1 Basic warnings.

The user is **obliged** to get acquainted with the Instructions for use and to follow all instructions for the machine operation so that the user's and other persons' health and property cannot suffer any harm.

Safety instructions contained in this manual do not describe all situations or conditions possibly occurring in practical use. Safety factors such as common sense, diligence and scrupulousness are not included; it is assumed, however, that all persons authorized for the machine operation or maintenance do possess them.

The machine can only be operated by persons in good mental and physical condition. For the professional use of the machine the machine owner is obliged to ensure work safety training and provide instructions on machine control for operators and to keep records on these trainings and briefings. **Also, the user is obliged to carry out a so called categorization of works according to the relevant national legislation.**

Should some instructions in the manual be unintelligible, you are encouraged to contact **your dealer** or directly the manufacturer of the machine. The contact address and telephone/fax connection are to be found at the end of the manual.

The manual of Instructions for use supplied with the machine is an integral part of the machine. It has to be available at any time, placed at a well accessible place with no risk of its damage. In the case that the machine is sold to another person, the Instructions for use must be given to the new machine owner. If the above conditions are not met, the manufacturer bears no responsibility for possible risks, accidents and injuries resulting from the machine operation.

The manufacturer bears no responsibility for damages caused by unauthorized and incorrect use of the machine and for damages caused by any machine modifications not authorized by the manufacturer as well as for damages caused by using the gearbox with other driving units or accessories than those approved by the gearbox manufacturer.

To prevent injuries to operators and other people occurring in the vicinity of the machine as well as property damages, it is absolutely necessary to follow safety regulations marked in the Instructions for use with the following warning safety symbol:

I	On seeing this symbol in the Manual, read the following instructions carefully!
----------	--

3 Operation safety.

3.1 Safety regulations.

- I This international symbol indicates important messages concerning safety. When you see the symbol, be aware of a possible injury threatening to you or to other persons and read the attached instructions carefully.
- I The machine operator must be over **18 years of age**. He (she) **is obliged** to get acquainted with the instructions for use of the driving unit, the engine and the driven accessories and is supposed to be informed of the general principles of work safety.
- I Don't start the engine, unless it is connected to the gearbox! Don't take the driving unit off the gearbox, if the engine is running! Don't start the engine in closed areas! Pay special attention when handling the driving unit, the engine exhaust silencer is hot after the engine is switched off! Pay attention to prevent fuel spilling and staining of engine parts during refuelling! But if it happens, dry the stained parts and wait until the petrol evaporates.
- I **Prior to each employment of the driving unit with an adapter**, check their parts (working mechanism and its casing in particular) for a possible damage or loosening. **Defects must be rectified without any delay**. Use only the original spare parts for repair. Follow the safety regulations stated in the instructions for use of the relevant adapter!
- I Machine operators should use working aids authorized to **EN 166** or **EN 1731** (tight-fitting garments, sturdy shoes, working gloves and protection glasses). Keep a safe distance given by the handlebars.
- I When the machine is in operation, all other persons (children in particular) and animals have to be outside the machine's working space. The machine operator can continue working only after they have been shown out to a **safe** distance. Follow the safety regulations stated in the instructions for use of the relevant adapter as well!
- I **Removal of any protective equipment and casings from the machines is forbidden. Follow the safety regulations stated in the instructions for use of the relevant adapter as well!**
- I The user has to follow the traffic regulations of the country, in which the machine is operated. Following regulations apply in the Czech Republic (local regulations in other countries may be different):
- All the accessories have to be transported in a trailer.
 - Operating a transport set is only permitted under meeting following conditions:
It is forbidden to operate it on all ground communications in case of reduced visibility.
If the visibility is not reduced, it is forbidden to operate it on streets of categories I and II, excepting their perpendicular crossing. The operation is permitted on streets of category III and on special-purpose roads.
The driver of the approved transport set has to own a driving licence of groups „A“ or „B“ or „T“ or higher. According to Law No. 361/2000, the set keeper is obliged to ask the local authorities for a permission which specifies further conditions to be met to ensure fluent road traffic when using two-wheel minitractors on public roads (except for the special-purpose roads). These conditions shall be marked on the rear side of the Technical certificate.

The minitractors meets provisions of the Decree of the Ministry of Transport No. 102/1995 with following exceptions:

§44: the driving unit and the trailer are not equipped with lights

§57 part 1: the set is not equipped with lights

§58 part 1: the set is not equipped with clearance lights

§60 part 1: the set is not equipped with brake lights

§61 part 1: the set is not equipped with flasher lights; changes of the driving direction are signalized by driver's arm

The sets were approved by the Ministry of Transport of the Czech Republic under No. 19 324/00-112, Certificate No. 4322-01-02

- I **Safe** slope access ability of all machines is 7° - see the instructions for use of the driving unit.
- I Pay special attention when working with the accessories connected to the DSK-316.1 series minitractors. It is forbidden to use public roads with these sets, except for their perpendicular crossing.
- I It is not permitted to use the machine in recreational and medical zones from 21 till 7 o'clock.
- I Before starting a work with any accessories, check the function of the safety engine switch on the left handle of the driving unit. The safety switch function is described below in this manual.
- I Use only position 2 of the safety switch during work with the machines – see the instructions for use for the driving unit.
- I Don't drive over easily inflammable materials – for example hay, straw.
- I All kinds of machine repair, adjustment, lubrication and cleaning are to be made with the machine switched off and spark plug cable disconnected.

4 Use, technical specifications.

4.1 Machine use.

The *DSK-316.1PSVN* and *DSK-316.1PVN* gearboxes – equipped with one of the driving units – are used as a basic unit for travel and drive of VARI System accessories which can easily be used for culm plant and grass mowing, mulching, snow clearing, sweeping of streets and other areas. The gearbox is equipped with a switchable wheel drive and a switchable accessories drive.

The approved driving units for the *DSK-316.PSVN* and *DSK-316.1PVN* gearboxes (when other driving units are used, the manufacturer doesn't provide the guarantee for the gearbox):

The driving units *PJ GCV 160*, *PJ GCV 190* and the older *PJ-5V* with HONDA 4-stroke engines are used as an energy source for the *DSK-316.1PSVN* gearbox. These driving units are popular most of all for the silent and powerful engines.

- I **Warning: safe slope access ability is 7°**

Pay attention not to exceed the maximum engine inclination of 30° for a short time (up to 1 minute); the long-term engine inclination (when the engine lubrication is not interrupted) is up to 20°.

The driving unit **JM4-003V** with **JIKOV** 2-stroke engine is used as an energy source for the **DSK-316.1PVN** gearbox. This set with the VARI System accessories is most of all suitable for working on slopes with an inclination higher than 20°.

I Warning: safe slope access ability is 7°

The approved accessories for the **DSK-316.1PSVN** and **DSK-316.1PVN** gearboxes (when other accessories are used, the manufacturer doesn't provide the guarantee for the gearbox):

SAMSON-56: drum mower for cutting high grass on maintained areas

DALILA: double-drum mower for high grass

TAJFUN-52: mulcher intended for cutting stands on non-maintained areas

F5,5/260/VARI: stump milling machine

KV-100/Z: cylindrical brush for sweeping roads and other areas and for snow clearing

KV-100: cylindrical brush for sweeping roads and other areas with sprinkling and dirt collecting

OP-1.0; OP-1.1; OP-1.2: hay belt tedder

SF-55: snow thrower

ASR-2V: dozer blade

MULA-150A: tipping cart and loading platform

AV-650: two-wheel seat (sulky) for easier work with the accessories

Note: connection of the accessories to the gearbox – see the respective manuals.

4.2 Technical data.

		DSK-316.1PSVN	DSK-316.1PVN
Length	mm	430	
Height	mm	350	
Width	mm	405	
Wheel track	mm	315	
Number of speeds		1	
Max. revolutions of drive shaft	min ⁻¹	982	853
Max. revolutions of wheel drive shaft	min ⁻¹	36,4	31,6
Max. travel speed	km/h	2,23	1,94
Wheel size	inch	13x5.00-6	
Tyre pressure	kPa / atm / PSI	225 / 2,3 / 33	
Weight	kg	38	
Oil filling	litres	0,55	
Oil grade	API/SAE	GL-5/80W-90	
Approved driving unit		PJ GCV 160 PJ GCV 190	JM4-003V

5 Instructions for use

5.1 Machine assembly.

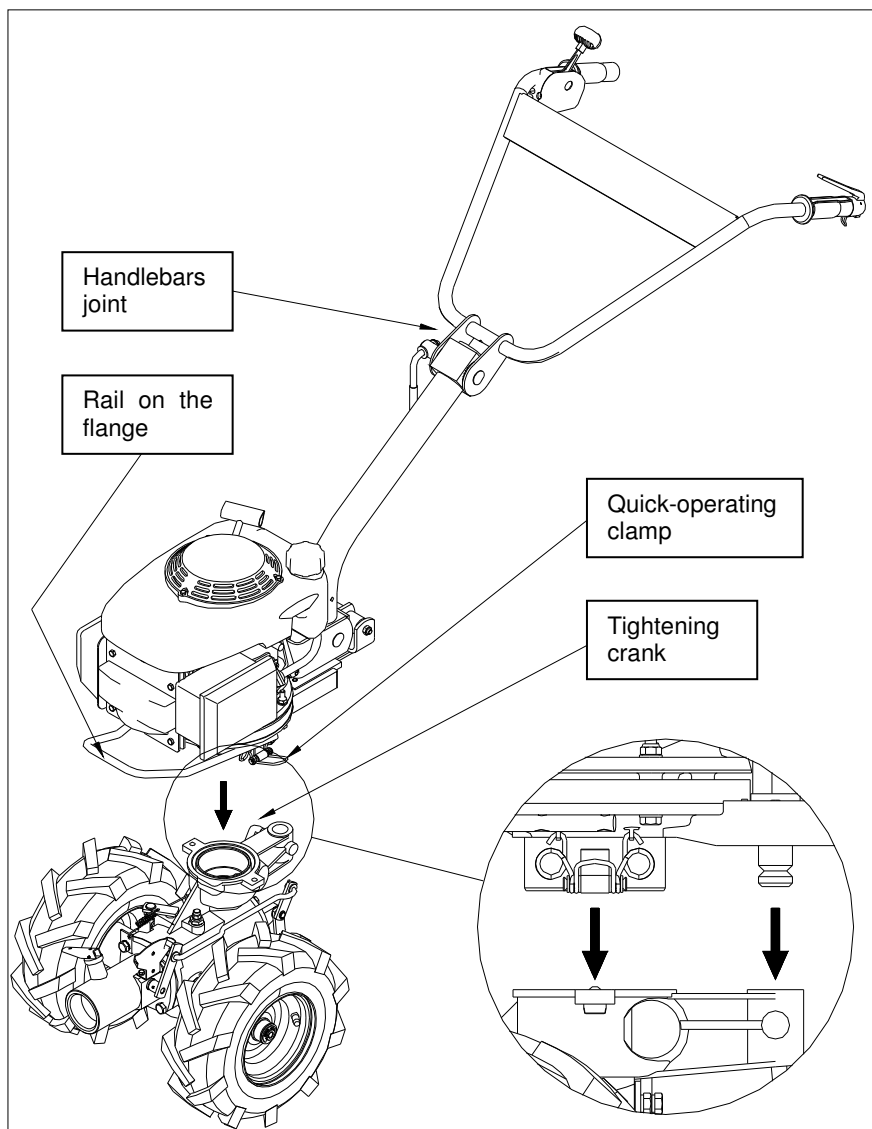
The machine is delivered unpackaged and adjusted by the manufacturer. Ask your dealer to provide a briefing.

5.1.1 Driving unit installation onto gearboxes.

Driving unit (DU) is a power source for driving all machines of the VARI system and it is to be installed in the flange formed in the upper part of a gearbox. The driving unit is secured against turning in the gearbox flange by the pivot of guiding handles swivel holder, which falls into the gearbox bracket hole and is secured by screwing the tightening crank.

Get the gearbox with attachable machine or implement to be used for work prepared according to relevant instructions for use. Clean the connection points for the driving unit and the inside of clutch disc; clean the surface of cylindrical flange and guiding handles swivel holder pivot.

- I Clutch disc on the gearbox must not be greasy otherwise a slippage of the centrifugal clutch could occur and clutch lining and engine crankshaft sealing might suffer damage due to high temperature.



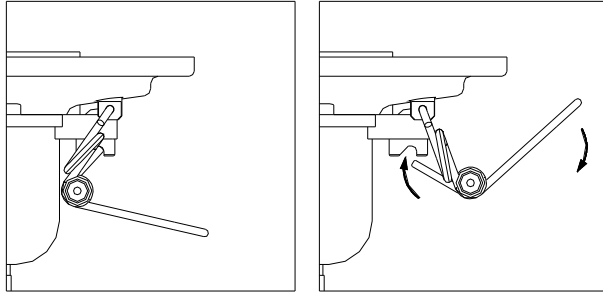
Release the tightening crank which retains the guiding handles swivel holder pivot on the gearbox.

Grip the driving unit with your left hand at the hand rail located on the lower part of the flange and with your right hand at the place of the handlebars joint.

Slide the DU onto the gearbox so that the cylindrical part of the DU flange falls into the gearbox flange and the pin on the swivel holder of guiding handles falls into the gearbox bracket hole.

Move the driving unit slightly from side to side until it fully settles onto the gearbox.

Secure the driving unit on the gearbox by means of two quick-operating spring clamps.



DSK-316.1PSVN

Put the clamp latches into the grooves of the pins on the gearbox flange and lock the clamps by pushing on the clamp spring loops down.

Tighten the tightening crank which secures the swivel holder pivot in the gearbox.

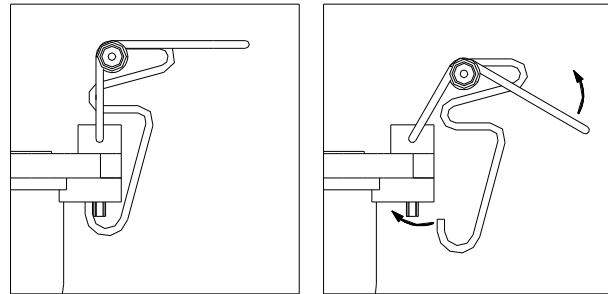
Take the DU off using the reverse procedure. Unlock the quick-operating clamps by pulling the clamp spring loops upwards. Pull the clamp latches out of pin grooves and turn them aside, so that they are not in the way when taking the DU off.

DSK-316.1PVN

Put the quick-operating clamp hooks behind the pins on the gearbox flange. Lock the clamps by pulling the clamp spring loops upwards.

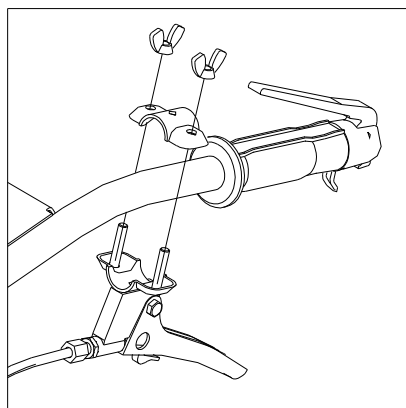
Tighten the tightening crank which secures the swivel holder pivot in the gearbox.

Take the DU off using the reverse procedure.



Unlock the quick-operating clamps by pushing the clamp spring loops down. Pull the clamp hooks from behind the pins and turn them aside, so that they are not in the way when taking the DU off.

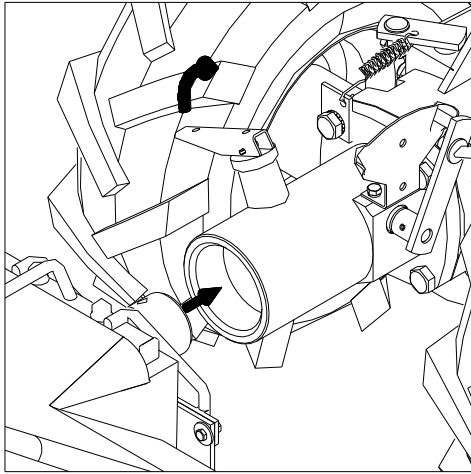
- I Pay special attention when locking and unlocking the quick-operating clamps! There's a risk of a finger injury! The springs are strong and higher power is needed for locking and unlocking them.
- I Pay special attention when taking the driving unit off and carrying it to another machine! The exhaust silencer remains hot for some time after the engine is switched off! Approach the driving unit from its left side (i.e. from the side where the air filter is located) when putting it on or taking it off.
- I Never take the driving unit off the gearbox (or put it on the gearbox) when the engine is running!



After the driving unit is installed, mount the wheel drive clutch lever on the left side of the handlebars (in front of the safety switch). Unscrew the butterfly nuts, take the lever holder off, place the lever in front of the left rubber handle, put on the lever holder and screw the butterfly nuts.

5.1.2 Accessories installation.

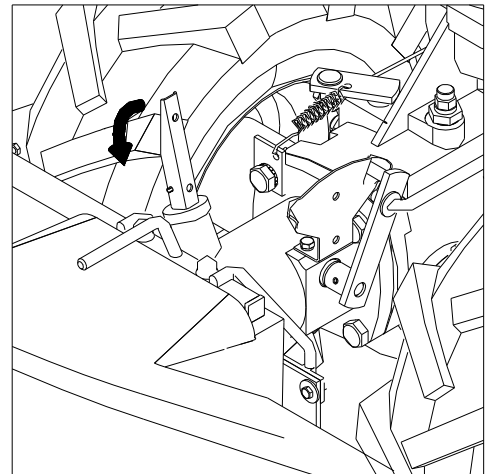
Before you connect the accessories to the gearbox, clean the inner side of the gearbox flange as well as the surface of the accessories connecting part from impurities and lubricate them slightly with a lubricant grease (for example MOGUL LV2-3).



Move the lever (operating the detent pin) on the gearbox flange up – the detent pin slides into the boss in the collar. Slide the accessories drive into the gearbox flange, all the way to the drive step.

Move the lever to its original position. Now turn the accessories slightly from side to side until the detent pin fully falls into the opening in the accessories drive.

- I Make sure that the detent pin fell into the opening in the drive!



5.2 Working with the machine

5.2.1 Operating positions of the wheel drive clutch lever

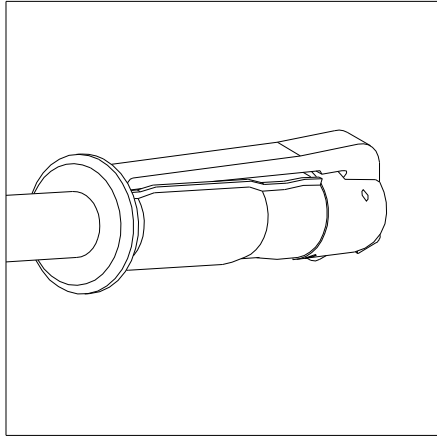
The machine is equipped with a wheel drive clutch lever which can be locked in the **OFF** position. If the clutch lever is pushed, the locking lever automatically falls into a groove in the lever holder and locks it in the **OFF** position. If you want to release the lever (start the wheel drive), the clutch lever has to be pushed to the handgrip, the locking lever has to be pushed and at the same time the clutch lever has to be released.

Operating positions of the wheel drive lever	
The machine stands – the lever is OFF and locked	The machine travels – the lever is ON

5.2.2 Operating positions of the BVA-96 safety switch

The **BVA-96** safety ignition switch meets the standard for safety ignition switches commonly used by manufacturers of small farming machines abroad. The BVA-96 switch ensures the engine ignition switch-off and hence the engine stoppage immediately after the operator has left its site either in a critical situation or when ending work.

I Safety ignition switch function must be checked prior to any use of the driving unit!



Position 1 – is used in starting the engine, in adjusting engine speed or in a short-time machine standstill at which the engine is still running. In this position, wire latch in the lower part of the safety switch arrests the lever in pressed position.

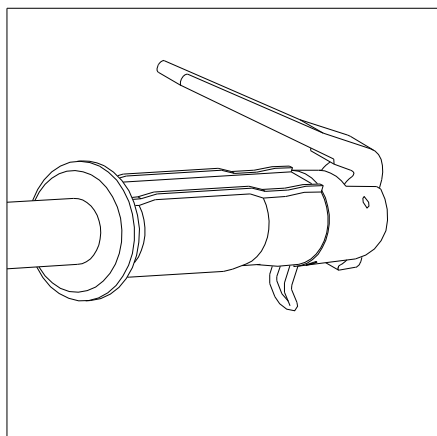
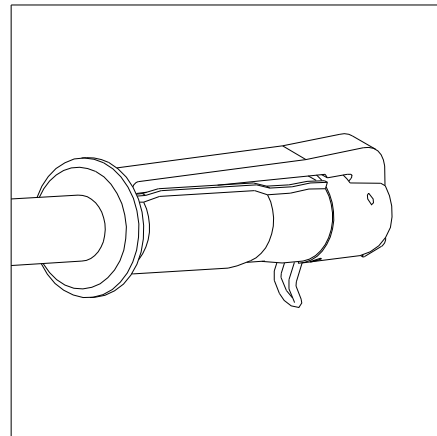
WARNING!

In this position of the safety switch always change gear to neutral on the gearbox or disengage the clutch of travel wheels, switching off the drive of working implements!

Position 2 – is used in machine operation.

WARNING!

For the safety switch to be able to fulfil its function in critical situations, the wire latch must be always released!



Position 3 – is used to switch off the engine in critical situations or after the end of work. The engine will be switched off at all times after the safety ignition switch lever on the left grip of handlebars has been released; taking off hand from the handrail will do. Wire latch must be at all times released – see Warning in the description of Position 2.

5.2.3 Starting and driving the machine

If all the parts of the machine (i.e. gearbox, driving unit and the working implement) are correctly assembled and adjusted according to the respective instructions for use, it is possible to start the engine.

Lock the wheel drive clutch lever in the OFF position ([see Chapter 5.2.1](#)) and switch off the accessories drive ([see Chapter 5.2.5](#))

Start the engine and set the idle speed – follow the instructions from the instructions for use for the respective driving unit.

Push the clutch lever, push the locking lever and release them at the same time – the wheel drive is switched on now. Set the maximum engine speed with the accelerator lever – the machine starts to move.

If it is not possible to engage the drive, it is necessary to shortly increase the engine speed and then try to engage the drive again. **Switch the drive on and off only if the machine is not moving and the engine is running at idle speed!**

If you want to stop, first set the idle engine speed.

After the end of work set the idle speed and leave the clutch lever in the OFF position. The machine is secured against spontaneous movement in this way.

I When starting the engine, the wheel drive clutch lever must be in the *OFF* position!

I **Never stop the wheel drive at higher engine speed.** The centrifugal clutch is on at such a moment and transfers the maximum power and torque on the gearbox. The clutch design only enables to switch it on (or off) at idle engine speed. Otherwise the wheel drive clutch mechanism will be damaged or destroyed.

5.2.4 Working with the gearbox

The *DSK-316.1PSVN* and *DSK-316.1PVN* gearboxes are designed to drive accessories; it is not possible to use it separately for any kind of work. Follow the instructions for use of the used implement when working.

If you want to transport the machine for a longer distance, use a two-wheel trailer; you can drive the machine for shorter distance, for example between meadows, but it is not allowed to drive on streets. Perpendicular crossing of streets is allowed. An exception is valid for working with sets with sweeping brushes and snow throwers: it is allowed to clean local roads and pavement edges and remove dirt from kerbs.

Thanks to the small distance between the wheels and their small diameter it is possible to make a turn with the machine in small space. When turning at the end of a row, it is recommended to slightly reduce the engine speed and lift the working implement.

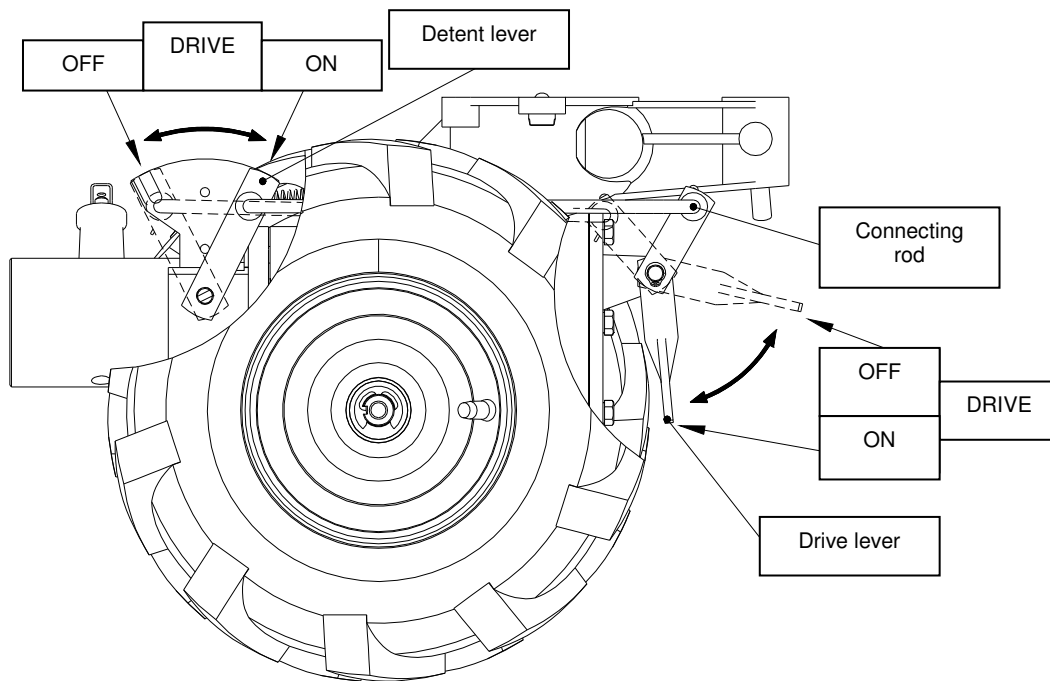
If you don't want the working implement to move during crossing, it is possible to switch it off.

I Always switch the drive when the machine stands still, the engine is switched off and the wheel drive clutch is on.

I Pay attention to the condition of the connecting parts – they must always be clean and not deformed. Otherwise it is not possible to easily put it on or take it off the gearbox drive.

5.2.5 Switching the working implements drive

The *DSK-316.1PSVN* and *DSK-316.1PVN* gearboxes are equipped with switchable drive of the working implements (accessories).



Drive switching – drive lever on the gearbox cover

To switch the drive off: move the drive lever to the upper position using your left foot – the detent pin on the detent lever falls into the front groove

To switch the drive on: press the drive lever to the lower position using your left foot – the detent pin on the detent lever falls into the rear groove

6 Maintenance, care and storage

To ensure a long-term satisfaction with our product, it must be given proper care and maintenance. Regular maintenance of the machine will prevent its early wear ensuring at the same time a correct functioning of all its parts.

Check if all the bolts and nuts are correctly tightened before every use of the gearbox. Make sure that the safety devices are all right. Regularly check the oil level in the gearbox. Occasionally check if the wheels are secured on the axle with the shackle ring and if the connecting rod is secured with cotter pins. Immediately remove jammed grass and other plants. When working with the mowing implements or with hay tedders, check these places at every machine cleaning performed during the work.

Check the condition of all the safety items before every use of the gearbox and the working implements. If you find any damage, even during work, it is necessary to stop the work immediately and repair the damaged safety items or replace them with new ones. Always use original spare parts for the replacement.

Follow all instructions for intervals of the gearbox maintenance. It is advised that you keep records on the number of working hours (for service purposes). Similarly as current maintenance, the after-season maintenance should be entrusted to one of our authorized service workshops in the case that you do not trust your own technical skills

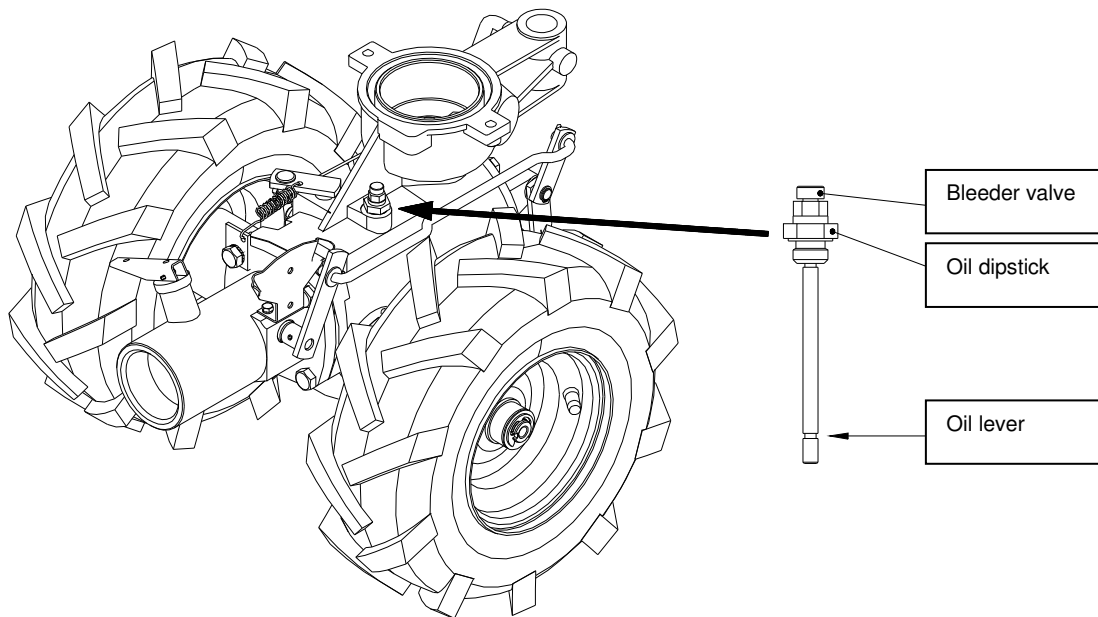
6.1 Machine lubrication and adjustment.

I Replacing oil, adhere to the basic principles of hygiene, regulations and laws on environment protection.

6.1.1 Replacement of oil in the gearbox.

The gearing operates in an oil bath. One of recommended gear oils available on the Czech market is **HEKRA PP 90H**. Oil replacement in a new gearbox is to be made after the **first 10 hours** of operation and then **after each 100 working hours** or after the end of the season. Oil volume should be checked once a month or before each use.

Oil replacement should be made when the box is warm, oil can be drained easily. Unscrew the oil dipstick, stand the gearbox on its side and let the oil run off into a prepared container. Fill the gearbox with new oil to the mark on the dipstick – 0,75 l. If the sealing on the dipstick is damaged, replace it with new one. Check that the bleeder valve on the oil dipstick is not clogged.



6.1.2 Gearbox lubrication

Treat all the contact and connecting surfaces with a slushing oil if the gearbox shall not be used for longer time or at the end of the season.

Lubricate the clutch bowden cable with silicon oil as needed during the season or after the season.

Regularly check (clean) and lubricate with oil (for example engine oil) the revolving parts (gear shifting lever, drive switching levers, detent pin, etc.) Always clean and preserve these places properly after the season.

It is recommended to remove the wheels and lubricate the wheel axle with grease once a month and every time after the season.

I When preserving the connecting surface of the flange for connection of the driving unit, the oil **cannot** get in the centrifugal clutch disc; the centrifugal clutch could slip and the clutch lining and the engine crankshaft sealing could be damaged because of the higher temperature.

6.1.3 Adjusting the wheel drive clutch bowden cable

After some time of operation, it is necessary to adjust the wheel drive clutch wire again. For a fine adjustment of the wire length, loosen the nut on the clutch lever and unscrew the adjusting screw. Check the function of the clutch lever. If the lever is pushed (in the locked

position, wheel drive is off), it must be possible to rotate the travel wheels freely; after the clutch lever is released, the travel wheels must start working in approx. ¾ of the lever track.

6.2 Washing and cleaning of the machine.

I Cleaning and washing the machine, proceed to observe valid regulations and legislation on the protection of water courses and other water resources against pollution or contamination with chemical substances.

All dirt, debris and plant residues should be removed from the gearbox after the end of the season. Check that all the contact and connecting surfaces are clean and not deformed – preserve them with slushing oil after the season as needed.

6.3 Table of service operations.

Operation	Season	After season
Check oil lever	prior to any use	*
Check the function of the safety switch	prior to any use	
Preservation of connecting surfaces	as required	yes
Lubrication of the wheel drive clutch bowden cable	as required	yes
Lubrication of the revolving parts	as required	yes
Cleaning of the machine from dirt	after each use	yes

* - first oil exchange after 10 working hours, then after 100 working hours or after the season

6.4 Machine storage.

Prior to any longer storage, clean the machine from all dirt and plant residues. Damaged paint on machine parts should be repaired.

For any long-term storage of the machine it is advised:

- a) to preserve the connecting surfaces
- b) to cover the clutch disc to protect it from pollution

Access of unauthorized persons to the machine should be prevented. The machine should be protected from weather impacts but air-tight protection should be avoided due to a possible underneath corrosion.

6.5 Disposal of packaging and machine after the end of service life.

After unpacking the machine, you are obliged to provide for the disposal of the packaging material with taking into account the use of secondary raw-materials according to national legislation and with respect to the decrees issued by local town or municipal authorities.

The following procedure is recommended for the machine disposal after the end of its service life:

1. Dismount all parts from the machine that can still be used.
2. Dismount plastic machine parts and parts made of non-ferrous metals. The stripped machine remainder and the dismantled parts are to be disposed according to the

national legislation and with respect to the decrees issued by local town or municipal authorities.

7 Instructions for ordering spare parts

The following data are to be used for an easier identification when ordering the spare parts:

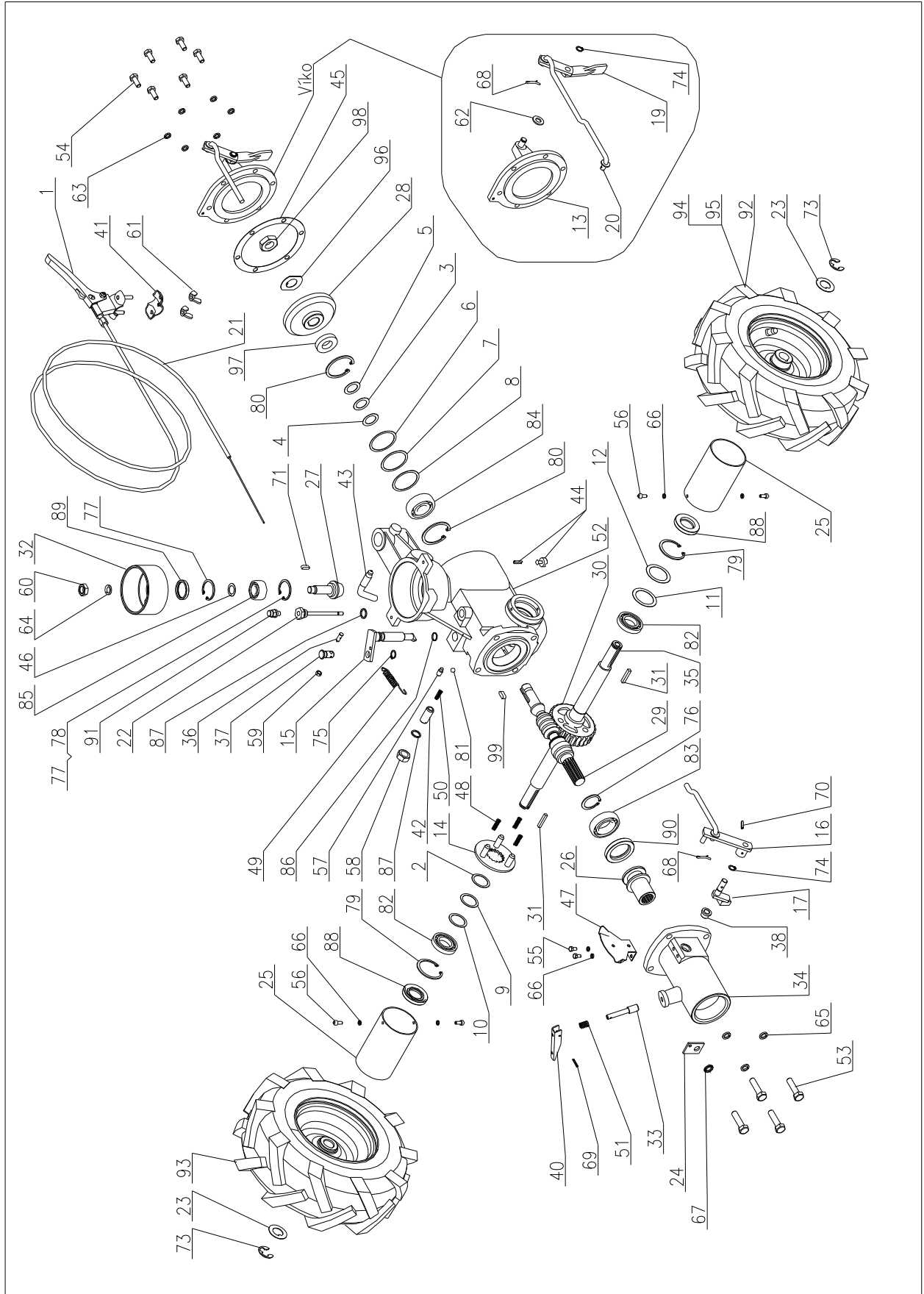
1. Machine type, engine type, machine serial number and year of manufacture;
2. Part number and name given by the manufacturer in the component list;
3. Number of ordered pieces, separately for each item;
4. Exact address, telephone number, fax number or e-mail address;
5. Should you be uncertain about the correct identification of the component, send the damaged component either to the nearest service shop or directly to the manufacturer;
6. All components should be ordered in the nearest service shop or at your dealer's.

In the case of any confusion concerning spare parts or technical problems, VARI, a.s. sales, customer service or technical departments are prepared to answer all your inquiries.

8 Contact to the manufacturer

VARI, a.s.	telephone:	(+420) 325 607 111
Opolanská 350	fax:	(+420) 325 607 264
Libice nad Cidlinou	e-mail:	vari@vari.cz
CZECH REPUBLIC	internet:	http://www.vari.cz/
289 07		

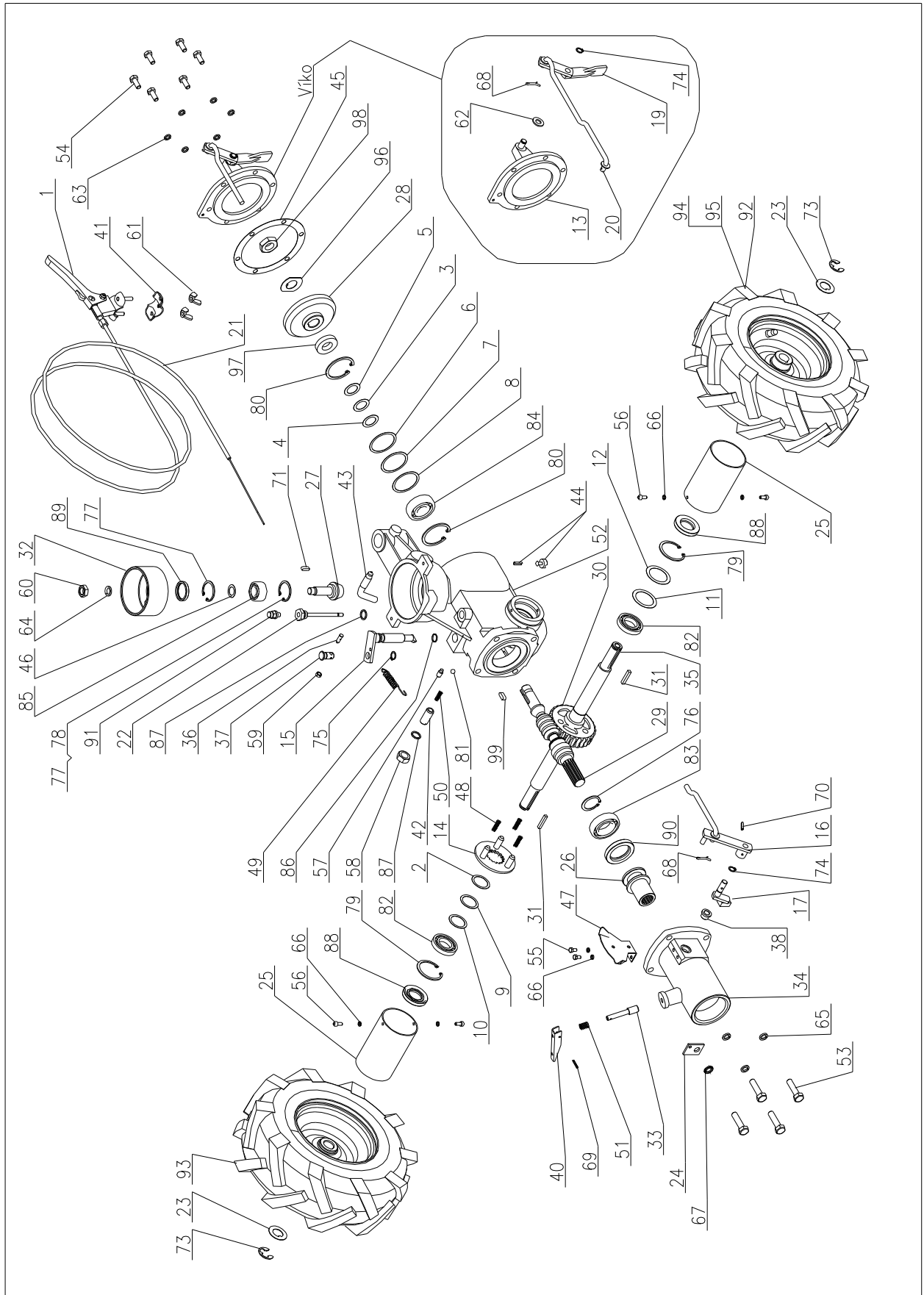
9 List of parts.



<h1>Gearbox</h1>					
Pos.	Name	Dimension	Drawing - Standard	Part No.	Pcs
1	Wheel drive lever		22 9 8045 029	124 035	1
2	Shim		32 0 9220 001	124 008	5
3	Shim		32 0 9220 056	127 039	3
4	Shim		32 0 9220 057	124 014	3
5	Shim		32 0 9220 058	127 041	3
6	Shim		32 0 9220 079	124 013	3
7	Shim		32 0 9220 080	127 037	3
8	Shim		32 0 9220 081	127 038	3
9	Shim		32 0 9220 086	126 003	5
10	Shim		32 0 9220 087	127 043	5
11	Shim		32 0 9220 157	124 001	2
12	Shim		32 0 9220 158	168 020	2
13	Gearbox cover		622 9 3253 014	2293253014	1
14	Driving disc		622 9 3616 001	124 006	1
15	Shifting shaft		622 9 8016 009	124 031	1
16	Detent lever		622 9 8032 012	127 020	1
17	Sleeve lever		622 9 8032 018	127 021	1
18					
19	Accessories drive lever		622 9 8032 060	2298032060	1
20	Connecting rod		622 9 8042 002	127 023	1
21	Wheel drive bowden cable		622 9 8074 013	124 526	1
22	Oil dipstick		622 9 8616 009	2298616009	1
23	Washer		63 0008 00 109	3000800109	2
24	Holder		632 0 1330 003	127 030	1
25	Wheel boot		632 0 1560 016	3201560016	2
26	Shaft connector		632 0 3024 018	127 004	1
27	Bevel pinion ¹⁾		632 0 3115 022	3203115022	1
27	Bevel pinion ²⁾		32 0 3115 019	124 038	1
28	Bevel gear ¹⁾		632 0 3125 032	168 522	1
28	Bevel gear ²⁾		32 0 3125 015	124 015	1
29	Worm shaft		632 0 3215 010	3203215010	1
30	Worm gear		632 0 3221 013	124 037	1
31	Key	3/16"x30	632 0 3330 021	189 036	2
32	Clutch disc		632 0 3621 022	124 036	1
33	Pin		632 0 3711 009	3203711009	1
34	Arm sleeve		632 0 3726 009	3203726009	1
35	Shaft - wheel axle		63 0041 00 006	3004100006	1
36	Locking pin		632 0 8011 001	124 021	1
37	Revolving pin		632 0 8011005	124 020	1
38	Bushing		632 0 8021 012	127 010	1
39					
40	Lever		632 0 8041 015	192 008	1
41	Lever holder		632 0 8047 002B	127 049	1
42	Locking screw		632 0 9020 002	110 021	1

1) This part is intended for DSK-316.1PSVN only

2) This part is intended for DSK-316.1PVN only

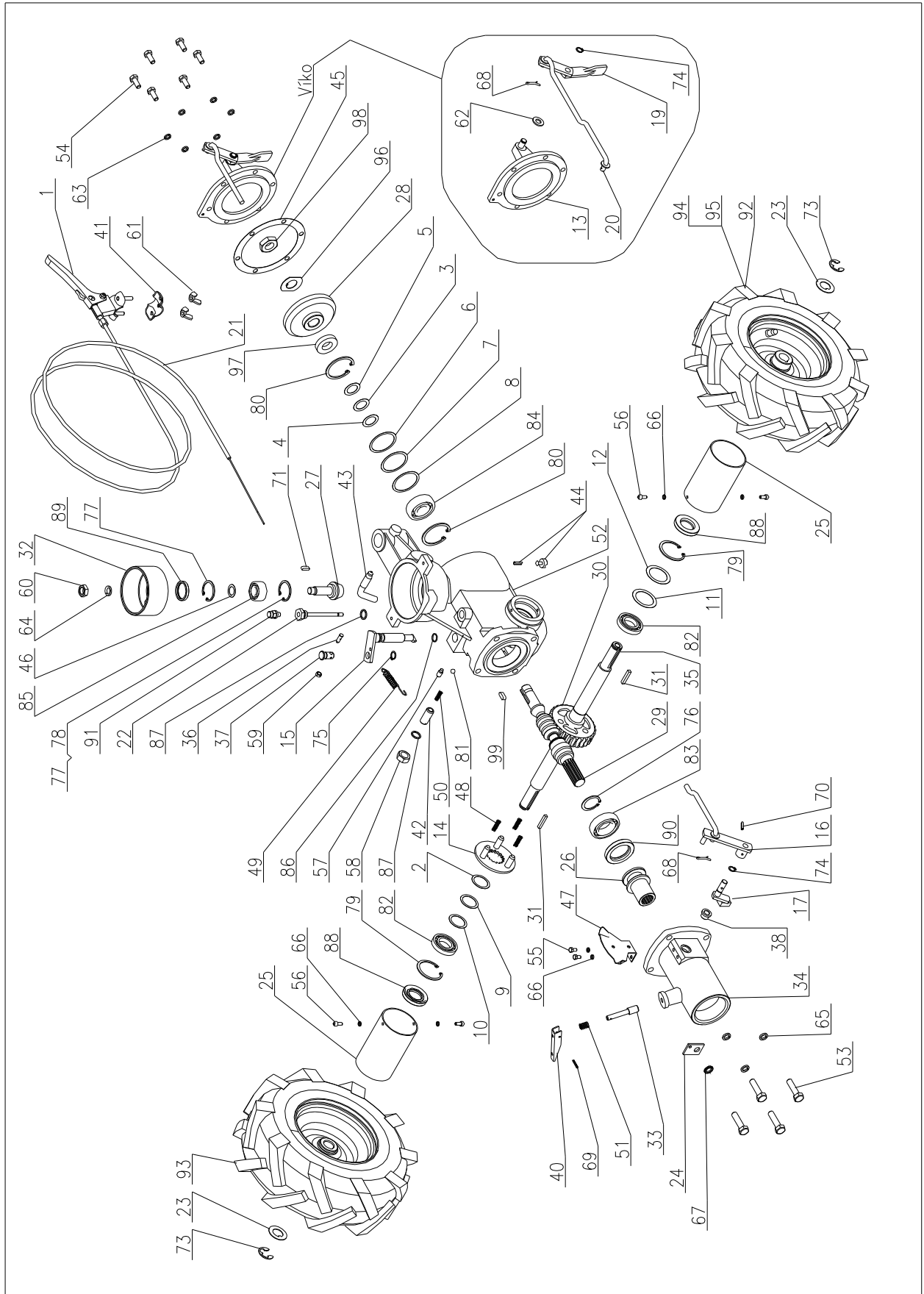


Gearbox

Pos.	Name	Dimension	Drawing - Standard	Part No.	Pcs
43	Locking screw - handle		632 0 9043 011	106 054	1
44	Rivet ¹⁾		632 0 9321 009	106 048	2
44	Pin ²⁾	5x16	ČSN 02 2156	106 528	2
45	Paper gasket		632 0 9620 015	127 016	1
46	Paper gasket		632 0 9620 017	124 532	1
47	Detent lever plate		632 0 9741 003	127 017	1
48	Pressure spring		632 0 9746 001	124 503	3
49	Tension spring		632 0 9746 002	124 511	1
50	Clutch spring		632 0 9746 003	110 505	1
51	Spring	1,25x11,25x28x8,5	632 0 9746 004	124 500	1
52	Box		632 0 3253 049	3203253049	1
53	Bolt	M10x40	ČSN 02 1101.55	124 529	4
54	Bolt	M8x18	ČSN 02 1103.25		6
55	Bolt	M5x10	ČSN 02 1103.55	127 550	2
56	Bolt	M5x12	ČSN 02 1143.50	189 580	4
57	Bolt	M8x16	ČSN 02 1183.20	125 505	1
58	Nut	M14x1,5	ČSN 02 1401.25	106 525	1
59	Nut	M6	ČSN 02 1402.25	127 521	1
60	Nut	M12x1,5	ČSN 02 1403.25	126 508	1
61	Nut	M6	ČSN 02 1665.25	125 501	2
62	Washer	10,5	ČSN 02 1702.15	189 567	1
63	Washer	8,2	ČSN 02 1740.05	104 574	6
64	Washer	12	ČSN 02 1740.05	124 523	1
65	Washer	10,2	ČSN 02 1740.05	106 530	3
66	Washer	5,1	ČSN 02 1740.05	127 512	6
67	Washer	10,5	ČSN 02 1745.05	124 527	1
68	Cotter pin	3,2x20	ČSN 02 1781.05	127 513	2
69	Pin	3x18	ČSN 02 2156	127 504	1
70	Pin	4x18	ČSN 02 2156	127 503	1
71	Key	5x5x16	ČSN 02 2562	150 544	1
72					
73	Shackle ring	15	ČSN 02 2929.05	184 621	2
74	Retaining ring	10	ČSN 02 2930	6021519	2
75	Retaining ring	12	ČSN 02 2930	6021502	1
76	Retaining ring	30	ČSN 02 2930	126 502	1
77	Retaining ring ²⁾	35	ČSN 02 2931	126 503	2
77	Retaining ring ¹⁾	35	ČSN 02 2931	126 503	1
78	Retaining ring ¹⁾	BR 37		124 521	1
79	Retaining ring	47	ČSN 02 2931	126 504	2
80	Retaining ring	52	ČSN 02 2931	126 505	2
81	Ball	diam. 7,938	ČSN 02 3680	110 517	1
82	Bearing	16005D	ČSN 02 4630	124 504	2
83	Bearing	6006A	ČSN 02 4630	124 506	1
84	Bearing	6304	ČSN 02 4637	124 507	1
85	Bearing	3202	ČSN 02 4665	124 508	1

1) This part is intended for DSK-316.1PSVN only

2) This part is intended for DSK-316.1PVN only



Gearbox					
Pos.	Name	Dimension	Drawing - Standard	Part No.	Pcs
86	Ring	12x2	ČSN 02 9281.2	124 510	1
87	Sealing ring	14x18	ČSN 02 9310.3	106 539	2
88	Shaft packing	25x47x7	ČSN 02 9401.0	124 505	2
89	Shaft packing	28x35x5	ČSN 02 9401.0	126 501	1
90	Shaft packing	36x55x8	UN 02 9401.0	124 515	1
91	Bleeder valve	M8x1		51551471028	1
92	Left wheel	13x5.00-6		2004100004	1
93	Right wheel	13x5.00-6		2004100005	1
94	Rim				2
95	Tubeless tyre				2
96	Locking plate		32 0 9231 001	124 016	1
97	Spacer		632 0 9320 103	3209320103	1
98	Nut	M20x1,5	ČSN 02 1403	126 507	1
99	Key	6x6x16	ČSN 02 2562	124 519	1

- 1) This part is intended for DSK-316.1PSVN only
- 2) This part is intended for DSK-316.1PVN only

10 Letter of Guarantee

To be completed by manufacturer


Name of product

Model (stick the bar code label here)

Serial number

Engine serial number

Warranty (months) **24**

Output control  *Made in Vietnam*

The above product was passed over to the purchaser without any defects including the appropriate commercial and technical documentation and accessories. The purchaser was duly informed about the principles of correct operation and technical maintenance of the product.

To be completed by seller

Name of purchaser

Address of purchaser

Purchaser's signature

Place of sale

Date of sale

Seller's stamp and signature

GUARANTEE CONDITIONS

Subject of warranty:

Warranty relates to the basic product including accessories supplied by VARI a.s.

Warranty period:

Warranty period for the product and accessories supplied with the product is 24 months from the date of sale to the purchaser if not stated otherwise in the "Service Manual for VARI Machines and Systems Equipped with HONDA Engines". Time from the enforcement of liability for defects to the date when the user was obliged to take over the thing after the end of repair is not included in the warranty period.

The seller is obliged to give the purchaser a receipt confirming the date of the right exercise and repair and the time of its duration. If the product is exchanged, the warranty period starts running again from the date on which the purchaser took over the new product. If it is a whole assembly to be replaced, the warranty period starts running for the given assembly again from the date of product take-over.

Scope of manufacturer's liability:

Manufacturer bears responsibility for the product having properties usual for the kind of the product in question and specified parameters for the whole period of warranty. The manufacturer does not answer for defects of the product resulting from current wear or from the product's use for purposes other than specified.

Warranty extinction:

Claim of warranty extincts if:

- a) the product was not used and maintained as specified in the Instructions for use, or it was damaged by any unauthorized operation by the user;
- b) the product was used in conditions or for purposes other than specified;
- c) the letter of guarantee for the product cannot be presented;
- d) data filled in the original product's documentation by the manufacturer, seller or service organization were intentionally falsified;
- e) a part of the product was replaced with a non-original component;
- f) the product was damaged or excessively worn due to improper maintenance;
- g) the product suffered an accident or was damaged by an Act of God;
- h) a modification was made to the product without manufacturer's consent;
- i) defects result from improper storage of the product;
- j) defects result from natural and common operating wear of the product
- k) the prescribed warranty inspection of the product was not made or was not made within the set-up time (this applies only for products with extended warranty period). Warranty inspections must be made in some products with the extended warranty period according to terms stipulated in the "Service Manual for VARI Machines and Systems Equipped with HONDA Engines";
- l) the product was connected to or operated with the equipment not approved by the manufacturer.

Complaints:

Complaints are applicable by purchasers at the seller's. When applying a complaint, the purchaser is obliged to submit a duly filled in letter of guarantee. Warranty repairs are carried out by sellers or by special service shops appointed by them.

Legislation:

Other purchaser/seller relations are ruled by relevant stipulations of the local national legislation.

<p>Warranty inspection 1 Date:Person in charge:</p> <p>Service shop stamp and signature</p>	<p>Warranty inspection 1 Machine model..... Serial No.:</p>
<p>Warranty inspection 2 Date:Person in charge:</p> <p>Service shop stamp and signature</p>	<p>Warranty inspection 2 Machine model..... Serial No.:</p>
<p>1st Warranty service Date of complaint delivery:..... Date of repair:..... Brief description of the defect:..... Replaced parts (new warrant of ... months):..... Parts:..... Repair made by:</p> <p>Service shop stamp and signature</p>	<p>1st Warranty service Machine model..... Serial No.:..... Date:..... Repair made by:..... Stamp and signature..... </p>
<p>2nd Warranty service Date of complaint delivery:..... Date of repair:..... Brief description of the defect:..... Replaced parts (new warrant of ... months):..... Parts:..... Repair made by:</p> <p>Service shop stamp and signature</p>	<p>2nd Warranty service Machine model..... Serial No.:..... Date:..... Repair made by:..... Stamp and signature..... </p>
<p>3rd Warranty service Date of complaint delivery:..... Date of repair:..... Brief description of the defect:..... Replaced parts (new warrant of ... months):..... Parts:..... Repair made by:</p> <p>Service shop stamp and signature</p>	<p>3rd Warranty service Machine model..... Serial No.:..... Date:..... Repair made by:..... Stamp and signature..... </p>
<p>4th Warranty service Date of complaint delivery:..... Date of repair:..... Brief description of the defect:..... Replaced parts (new warrant of ... months):..... Parts:..... Repair made by:</p> <p>Service shop stamp and signature</p>	<p>4th Warranty service Machine model..... Serial No.:..... Date:..... Repair made by:..... Stamp and signature..... </p>