

# VARI®

TRADITIONAL MANUFACTURER  
AND SUPPLIER OF  
GARDEN MACHINERY

MOWERS / MULCHERS / MINITRACTORS / BRUSHES / LOG SPLITTERS / OTHER



„Grow and be selfsufficient with VARI.“

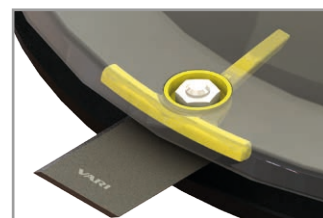
SINCE  
**1969**  
VARI





#### DS-521Z, DS-521 AGATHA DRUM MOWERS

- / tough, resistant and innovative cover made of painted zinc coated metal sheet
- / strap holders for better fixation during the transport
- / double cutting disc with 4 blades (T-Bar bracing)
- / independent switching of wheel and cutting drives
- / precise guiding thanks to the fixed wheel drive
- / 6" arrow-shaped wheels
- / safety brake of the cutting disc
- / hardened VARI blades



#### BDR-620DZ, BDR-620DH DOROTHA BRUSH CUTTERS

- / tough, resistant and innovative cover made of painted zinc coated metal sheet
- / strap holders for better fixation during the transport
- / double cutting disc with 4 blades (T-Bar bracing)
- / independent switching of wheel and cutting drives
- / precise guiding thanks to the fixed wheel drive
- / big 8" arrow-shaped wheels
- / safety brake of the cutting disc
- / hardened VARI blades

TYPE	DS-521Z	DS-521	BDR-620DZ	BDR-620DH
Engine	VARI XP-200A	HONDA GCV170	VARI XP-200A	HONDA GCV200
Working width	58,5 cm	58,5 cm	62,2 cm	62,2 cm
Area performance	up to 1 170 m <sup>2</sup> /h	up to 1 170 m <sup>2</sup> /h	up to 1 493 m <sup>2</sup> /h	up to 1 742 m <sup>2</sup> /h
Number of speeds	1 (2,0 kph)	1 (2,0 kph)	1 (2,4 kph)	2 (2,0 - 2,8 kph)
Weight	58 kg	57 kg	67 kg	67 kg
Article no.	4425	4571	4574	4572

More information about  
VARI drum mowers  
at [vari.cz/en](http://vari.cz/en)







## BDR-720 ADELA PRO DRUM MOWER BDR-720D ADELA PRO BRUSH CUTTER

- / HONDA GCV200 engine (201 cm<sup>3</sup>, 12,7 Nm, EURO V)
- / mechanical gearbox (4 speeds, reverse, differential)
- / cutting disc with a working width of 70 cm (4 blades, disc brake within 5 sec)
- / new design of handlebars (side and height adjustment, antivibration damping item)
- / pressed chassis parts, low centre of gravity and wide wheel gauge
- / big wheels with a pattern for perfect adhesion on grass
- / excellent manoeuvrability in the orchards or other narrow places
- / service and parking brake, hitch for the AV-650 seat
- / BDR-720D brush cutter is equipped with an additional safety cover

TYPE	BDR-720	BDR-720D
Engine	HONDA GCV200	HONDA GCV200
Working width	70 cm	70 cm
Area performance	up to 3 199 m <sup>2</sup> /h	up to 3 199 m <sup>2</sup> /h
Number of speeds	4 + R (1,88 - 2,76 - 3,29 - 4,57 kph, R 2,58 kph)	4 + R (1,88 - 2,76 - 3,29 - 4,57 kph, R 2,58 kph)
Weight	81 kg	86 kg
Article no.	4554	4555

TYPE	AV-650 SEAT
Article no.	4217

# Easy handling and high performance / BRUSHCUTTERS AND ELECTRIC HEDGE

## INNOVATION 22

new harness  
and string head



## VARI 432HB, VARI 522HB BRUSHCUTTERS

- / low weight and easy operation
- / powerful two-stroke engine with the displacement of 43 cm<sup>3</sup>, 52 cm<sup>3</sup>
- / string head, three-tooth cutting blade, back harness and mixing canister as basic equipment
- / possible accessories: steel brush for weed removal (MiniVedex)

TYPE	MINIVEDEX BRUSH
Article no.	201888

## VARI 150 ELECTRIC HEDGE TRIMMER

- / copes with branches up to 20 mm in diameter
- / cutter bar with a double-sided hardened blades
- / working width of 61 cm
- / ergonomic front handle adjustable in 3 positions
- / 180° revolving handle in 5 positions, electric brake

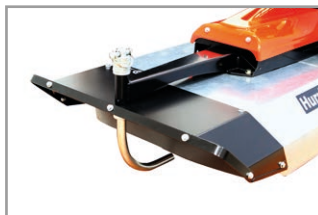
TYPE	432HB	522HB	150
Engine	LH 43 cm <sup>3</sup> (two-stroke)	LH 52 cm <sup>3</sup> (two-stroke)	230 V - 50 Hz
Engine power	1,7 HP	1,9 HP	550 W
Weight	7,1 kg	7,8 kg	3,2 kg
Article no.	4243	4503	4518

## For irregularly cut areas / SINGLE-PURPOSE MULCHERS



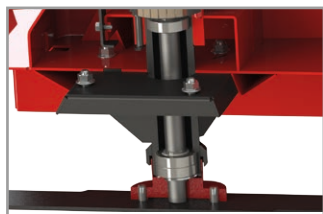
### F-550Z, F-550 BRUSH CUTTERS WITH MULCHING BLADE

- / long grass mulching
- / independent switching of wheel and cutting drives
- / height adjustment of the handlebars in 6 positions
- / safety brake of the blade
- / patented front spur
- / strap holders for better fixation during the transport
- / low centre of gravity, perfectly balanced
- / copes with self-seeded shrubbery up to 1 cm in diameter
- / adjustment of the cutting height from 4 to 9 cm



#### TYPE MULCHER FRONT COVER

Article No. 4447



### F-700 HYDRO MULCHER

- / comfortable system of manipulation – gear change with no need to stop the blade drive
- / gearbox cooling system
- / front wheels resistant to puncture
- / TUFF TORQ K-46ED hydrostatic gearbox
- / replaceable support of the blade shaft and bearings
- / automatic differential lock
- / service and safety brakes
- / guaranteed slope accessibility 30°
- / accessory: sprung seat

TYPE	F-550Z	F-550	F-700 HYDRO
Engine	VARI XP-200A	HONDA GCV200	HONDA GXV 390
Working width	58 cm	58 cm	70 cm
Area performance	up to 1 392 m <sup>2</sup> /h	up to 1 392 m <sup>2</sup> /h	up to 5 600 m <sup>2</sup> /h
Number of speeds	2 (1,8 - 2,4 kph)	2 (1,8 - 2,4kph)	continuous gear change (0-8,0 kph, R 0-1,5 kph)
Weight	56 kg	56 kg	135 kg
Article no.	4585	4567	4448

More information  
about mulchers  
at [vari.cz/en](http://vari.cz/en)



#### TYPE AV-650 SEAT

Artikel-Nr. 4217





## CB-800, CB-1000 SWEEPING BRUSHES

- / new generation of the CB brushes
- / HONDA GCV170 engine (166 cm<sup>3</sup>, 11,1 Nm, Euro V)
- / the same handlebars as at the drum mowers and brush cutters
- / new chassis construction
- / new supporting wheel, continuous adjustment
- / two travel speeds
- / easy change of the working width thanks to a new support of the sweeping brushes
- / wider wheel gauge – possibility to use snow chains
- / option: collector, dust cover, dozer blade, snow chains



### TYPE

### DUST COVER

**AP-80**

for CB-80, CB-800

Article no.

**4443**

### DUST COVER

**AP-100**

for CB-1000

**4597**



### TYPE

### COLLECTOR

**BS-80**

for CB-80, CB-800

Article no.

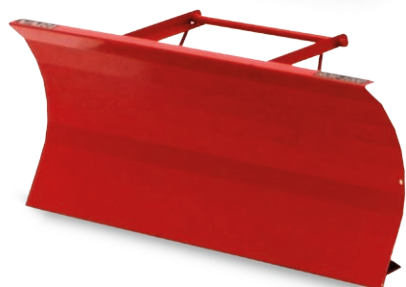
**4445**

### COLLECTOR

**BS-100**

for CB-1000

**4458**



### TYPE

### SNOW BLADE

**OR-80**

for CB-80, CB-800

Article no.

**4451**

### SNOW BLADE

**ROR-1000**

for CB-1000

**4519**

TYPE	CB-800	CB-1000
Engine	HONDA GCV170	HONDA GCV170
Working width	80 cm	100 cm
Area performance	up to 2 824 m <sup>2</sup> /h	up to 3 530 m <sup>2</sup> /h
Number of speeds	2 (2,8 - 3,5 kph)	2 (2,8 - 3,5 kph)
Weight	70 kg	74 kg
Article no.	<b>4588</b>	<b>4591</b>

More information about  
sweeping brushes  
at [vari.cz/en](http://vari.cz/en)



### TYPE

### SNOW CHAINS

for CB-800, CB-1000

Article no.

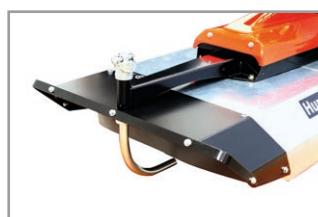
**4594**





## HURRICANE MAX F-580 BRUSH CUTTER WITH MULCHING BLADE

- / set of a MaX multifunctional carrier and the VM-580 mulching adapter
- / possible to change the mulcher for cutting drum, snow blade, passive brush or finger-wheel hay rake
- / patented connection with adapters
- / two travel speeds
- / big 8" wheels
- / height adjustment of the handlebars in 6 positions



**TYPE** MULCHER  
FRONT  
COVER

Article No. **4447**

## LUCINA MAX BDR-620B, BDR-620 DRUM MOWERS

- / set of a MaX multifunctional carrier and the BSX-620 drum mower adapter
- / possible to change the cutting drum for mulching adapter, snow blade, passive brush or finger-wheel hay rake
- / patented connection with adapters
- / two travel speeds
- / big 8" wheels
- / height adjustment of the handlebars in 6 positions

TYPE	BDR-620B	BDR-620	F-580
Engine	B&S 875 EXI	HONDA GCV200	HONDA GCV200
Working width	62,2 cm	62,2 cm	58 cm
Area performance	up to 1 742 m <sup>2</sup> /h	up to 1 742 m <sup>2</sup> /h	up to 1 624 m <sup>2</sup> /h
Number of speeds	2 (2,0 - 2,8 kph)	2 (2,0 - 2,8 kph)	2 (2,0 - 2,8 kph)
Weight	62 kg	60 kg	57 kg
Article no.	<b>4430</b>	<b>4569</b>	<b>4573</b>

More information about multifunctional carriers at [vari.cz/en](http://vari.cz/en)







- / intended for cutting long grass for drying
- / HDG cover – tough and innovative
- / disc with four blades (T-Bar bracing)
- / original hardened VARI blades

**TYPE** DRUM MOWER  
**BSX-620**

Working width 62,2 cm

Article no. 4506

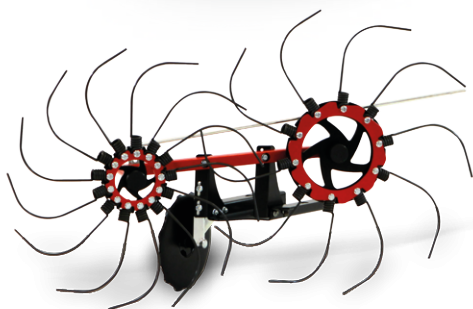


- / intended for long grass cutting and mulching, copes with older grass and thin self-seeding plants
- / patented design of the cutting space and the guiding spur
- / hot-dip galvanised cover
- / solid GATOR mulching blade
- / possibility to add the mulcher front cover, art.no. 4447

**TYPE** MULCHER  
**VM-580**

Working width 58 cm

Article no. 4429



- / single row finger-wheel hay rake
- / spring wires for better copying of the terrain
- / wheels with ball bearings
- / height adjustable support wheel
- / patented design, effortless connection

**TYPE** FINGER-WHEEL HAY  
RAKE **SH-600**

Working width 60 cm

Article no. 4517

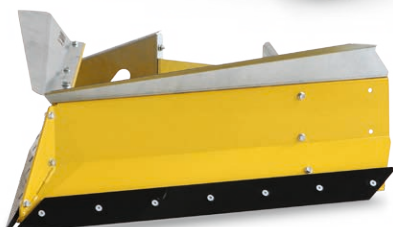


- / ideal for pavements, especially interlocking pavements
- / continuous side adjustment
- / very low dustiness while working with the brush
- / long lifetime of the hairs – low abrasion

**TYPE** PASSIVE BRUSH  
**PK-950**

Working width 95 cm

Article no. 4459



- / suitable for new-fallen snow
- / polypropylene sliding plates
- / easy connection to the machine

**TYPE** SNOW BLADE  
**SP-800**

Working width 79 cm

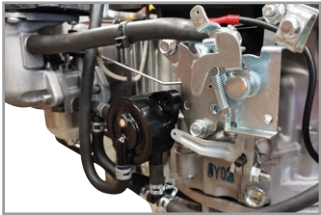
Article no. 4450





**INNOVATION 22**  
fuel feed pump

- RAPTOR HYDRO MULTIFUNCTIONAL CARRIER**
- / KOHLER COMMAND PRO CV224 - cast-iron cylinder sleeve, force feed lubrication, 224 cm<sup>3</sup>, OHV, 14,9 Nm, 7,75 HP
  - / comfortable system of manipulation – gear change with no need to stop the blade drive
  - / tough pressed chassis parts
  - / TUFF TORQ K-46ED hydrostatic gearbox
  - / automatic differential lock
  - / antivibration placing of handlebars
  - / integrated clutch with adapter brake
  - / integrated additional fuel tank with the volume of 4,5 l
  - / comfortable and fast connection of the adapters



**TYPE** **RON SUPPORTING LEG**  
**Article no.** **4507**



**TYPE** **WHEEL WEIGHT**  
**2x 11,5 KG**  
**Article no.** **4473**



**TYPE** **SNOW CHAINS**  
**Article no.** **4476**

TYPE	RAPTOR HYDRO
Engine	KOHLER CV224
Number of speeds	continuous gear change (0-8,0 kph, R 0-1,5 kph)
Weight	74 kg
Article no.	4553



**AV-650 SEAT**

/ for comfortable cutting and cleaning of large areas / sprung sheet-metal seat / innovated wheels and brakes / footrests and telescopic bar / loading capacity of 120 kg

**Article no.** **4217**



**ANV-200 TRAILER**

/ sprung sheet-metal seat, reflecting glasses, comfortable footrests / removable sidewalls and rear side / tilting body / service and parking brakes / loading capacity of 200 kg

**Article no.** **4475**





- / intended for cutting long grass for drying
- / pressed double cutting disc VARI with 5 blades (T-Bar bracing)
- / tough pressed chassis and robust shaft support
- / RBS-700D brush cutter equipped with an additional safety cover

**TYPE** DRUM MOWER  
**RBS-700**  
**BRUSH CUTTER**  
**RBS-700D**

Working width 70 cm

Article no. 4472 / 4479



- / mulches long grass using the GATOR mulching blade
- / tough pressed chassis
- / patented placing of the blade
- / height adjustable front spur

**TYPE** MULCHER  
**RMS-600**

Working width 60 cm

Article no. 4471



- / for hay tedding and raking, grass aeration
- / raking the fallen leaves
- / new-fallen snow removing (using the optional snow blades)
- / total width of 115 cm

**TYPE** HAY TEDDER  
**ROP-115**

Working width 90 cm

Article no. 4477



- / intended for removing snow and bulk material from solid surfaces
- / continuous side adjustment
- / spring suspension, rubber edge
- / zinc coated skid plate

**TYPE** DOZER BLADE  
**RSR-1000**

Working width 100 cm

Article no. 4478

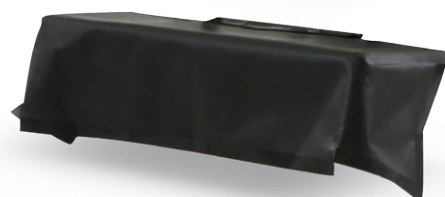


- / for all year-round cleaning of flat surfaces
- / two operation speeds
- / bristles in a spiral design
- / duralumin worm gearbox
- / side adjustment from the operator's place
- / two stabilizing wheels with fine adjustment
- / side copying of the terrain  $\pm 10$  degrees
- / wide accessory range – collector, snow blade, dust cover

**TYPE** SWEEPING BRUSH  
**RKV-1000**

Working width 100 cm

Article no. 4508



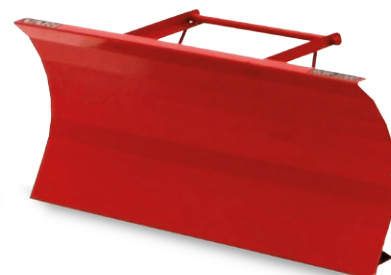
**DUST COVER**  
**AP-100**

Article no. 4597



**COLLECTOR**  
**BS-100**

Article no. 4558



**SNOW BLADE**  
**ROR-1000**

Article no. 4519





The base of the modular system is a driving unit with handlebars and an automatic three-jaw centrifugal clutch. It can drive not only two basic gearboxes, **DSK-316** and **DSK-317**, but a whole range of adapters as well - so called equipment connected **directly to the driving units**. The genius advantages of the VARI modular system are especially simplicity, variability and easy transport, because any of the machine combination is possible to divide into three separate pieces. There was a development of engines and handlebars throughout the years, but the mutual compatibility remains.

The driving unit with the **VARI XP-200A** engine with the steel cylinder sleeve is very attractive product also due to its very favourable price. Another option is the motorization from the Honda producer, which we have been using in VARI since 1993. Now with a brand-new **HONDA GCV200** engine. The top model for the most demanding customers is equipped with **KOHLER COMMAND PRO CV224** engine. It is ranged to the best engines in its category thanks to the engine displacement of 224 cm<sup>3</sup>, the cast-iron cylinder sleeve, the force feed lubrication with spatter, the oil filter, the fuel pump and above all high power and torque. At the same time, it is the most powerful motorization within the fifty-year history of VARI system.

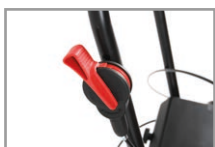


TYPE	PJXP200	PJGCVx200	PJCV224
Engine	VARI XP-200A	HONDA GCV200	KOHLER COMMAND PRO CV224
Engine displacement	196 cm <sup>3</sup>	201 cm <sup>3</sup>	224 cm <sup>3</sup>
Technology	OHV	OHV	OHV
Torque	10 Nm	12,7 Nm	14,9 Nm
Cylinder sleeve	yes	no	yes
Article no.	4427	4551	4552

More information about the modular system at [vari.cz/en](http://vari.cz/en)







#### **BDR-650V DRUM MOWER**

/ detachable drive of the drum / working width: 62,2 cm / one speed / intended for four-stroke VARI driving units

Article no. **4520**



#### **W3000V PRESSURE WASHER**

/ max. pressure: 2 900 PSI / 200 bar / working pressure: 2 300 PSI / 159 bar / flow rate: 8,5 l/min / three different nozzles / suction of the detergent / intended for four-stroke VARI driving units / for more accessories visit [www.vari.cz/en](http://www.vari.cz/en)

Article no. **3688**



#### **RP-T2/S ROTARY HOE**

/ working width: 16, 22, 32, 38 cm / working depth: 2-8 cm / worm gearbox in oil suspension / intended for two-stroke and four-stroke VARI driving units

Article no. **4347**



#### **RAPIDO WOOD CHIPPER**

/ worm slow-running shredder / max. diameter of crushed material: up to 60 mm / approx. size of wood chips: 20 mm / double-threaded spiral blade / self-feeding of the crushed material into the crushing head / intended for two-stroke and four-stroke VARI driving units

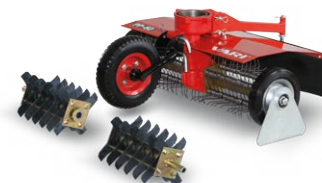
Article no. **4449**



#### **SET FOR CONVERTING**

**RP-T2/S INTO PP-60**  
/ for all machines produced since 1969

Article no. **4394**



#### **PP-60 AERATOR/SCARIFIER**

/ working width: 55 cm / working depth: 5 mm / easy to replace springs by blades / worm gearbox in oil suspension / intended for two-stroke and four-stroke VARI driving units

Article no. **4379**



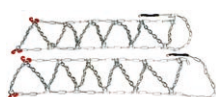
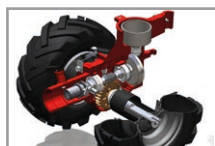
## Active power take-off for accessories drive / DSK-316 GEARBOX + ACCESSORIES



**GEARBOX**  
**DSK-316.1PSVN**

/ number of speeds: 1 forwards

Article no. **4262**



**SNOW CHAINS**

/ for DSK-316.1PSVN and PSZ produced since 2009

Article no. **4330**



**SEAT**  
**AV-650**

/ comfortable sprung seat with side support

Article no. **4217**



UNTIL SOLD OUT

**GARDEN SHREDDER**  
**KAJMAN-55**

/ branch diameter: up to 55 mm

Article no. **4431**



**DRUM MOWER**  
**SAMSON-56**

/ working width: 56 cm

Article no. **3648**



**MULCHER**  
**TAJFUN-52**

/ working width: 52 cm

Article no. **4150**



**BAR MOWER**  
**LSE-120**

/ working width: 117 cm

Article no. **4309**



**SWEEPING BRUSH**  
**KV-100/Z**

/ working width: 100 cm

Article no. **4031**



**COLLECTOR**  
**BS-100**

/ for KV-100 and KV-100/Z

Article no. **4458**



**DOZER BLADE**  
**ASR-850**

/ working width: 85 cm

Article no. **3808**



**SNOW THROWER**  
**SF-55**

/ working width: 55 cm

Article no. **3677**



**HAY TEDDER**  
**OP-115**

/ working width: 90 cm

Article no. **4493**



**SNOW BLADES**  
**OP-115, OP-145**

/ OP-115 – 8 pcs  
/ OP-145 – 10 pcs

Article no. **3758**



**HAY TEDDER**  
**OP-145**

/ working width: 120 cm

Article no. **4494**



## For woods and transport / DSK-317.1/S GEARBOX + ACCESSORIES



### MINITRACTOR VARI GLOBAL WITH ANV-400 TRAILER

/ DSK-317.1/S gearbox (speeds: 3+R)  
/ TN-GLOBAL drive axle  
/ height and side adjustment of the handlebars  
/ Z-01 hitch, ON-1 supporting leg  
/ Article no. 4437 (VARI XP-200A)  
4581 (HONDA GCV200)  
4580 (KOHLER CV224)

The driving unit can be moved from the **DSK-316** gearbox to the **DSK-317** gearbox in a very simple way without using tools.

The **VARI GLOBAL minitractor** with the DSK-317.1/S gearbox is meant for heavy duty as a soil cultivation, soil loosening or cargo transport. It is possible to connect a one-way plough or a swing one, a potato digger or a potato planter, a smoothing harrow, a cultivator with roller, a dozer blade or a tipping trailer.



### TRAILER ANV-380

/ loading capacity of 380 kg / reflecting glasses / sprung ergonomic seat  
/ tilting body / service and parking brakes / comfortable footrests

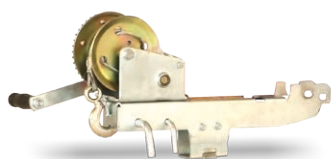
Article no. 4460



### TRAILER ANV-400

/ loading capacity of 400 kg / reflecting glasses / sprung ergonomic seat  
/ 12" wheels, car tyres / strap holders / service and parking brakes

Article no. 4410



### DRAWING WINCH PN-200

/ connected to the TK-01 third wheel or to BZN-002 hitch / stainless rope with the diameter of 4 mm  
/ rope length of 10 m, possible to prolong

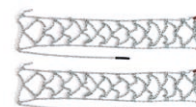
Article no. 4557



### THIRD WHEEL TK-01

/ for easier manipulation with the minitractor  
/ suitable for pulling logs from woods / ideal in combination with the PN-200 drawing winch  
/ possible to load with two 5kg weights

Article no. 4516



### SNOW CHAINS FOR A DRIVE AXLE

/ the great helper not only on snow, but for example on soft soil in forest as well

Article no. 4542





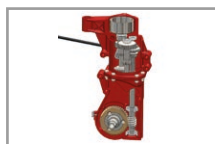
**MINITRACTOR VARI GLOBAL  
WITH APH-352 SWING PLOUGH**  
/ DSK-317.1/S gearbox (speeds: 3+R)  
/ TN-GLOBAL drive axle  
/ height and side adjustment of the handlebars  
/ APH-352 swing plough (Article no. 3611)  
/ BZN-002 complete hitch (Article no. 3710)  
/ NT-3 adjusting element (Article no. 3711)



**GEARBOX  
DSK-317.1/S**

/ number of speeds: 3 + R

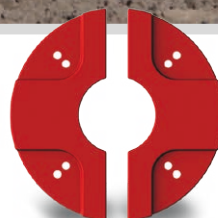
Article no. 4224



**DRIVE AXLE  
TN-GLOBAL**

/ wheel size: 5.00 - 12"  
/ adjustable hubs of the wheels

Article no. 4367



**INNER WEIGHT  
FOR DRIVE AXLE  
TN-GLOBAL, TN-01**

/ 4 pcs, total weight 25 kg

Article no. 4405



**PLOUGHING GIRDLES  
ON TN-GLOBAL**

/ wheel size: 5.00 - 12"

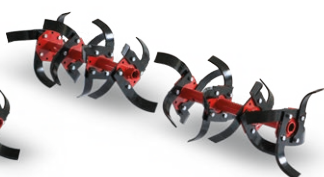
Article no. 4406



**LANCED LOOSENING  
DEVICE KUK-96**

/ for heavy soils  
/ working width: 83 / 96 cm

Article no. 4375



**LANCED LOOSENING  
DEVICE KUK-125**

/ for heavy soils  
/ working width: 125 cm

Article no. 4376



**ANGULAR LOOSENING  
DEVICE KUR-70**

/ for lighter soils  
/ working width: 60 / 70 cm

Article no. 4377



**ANGULAR LOOSENING  
DEVICE KUR-112**

/ for lighter soils  
/ working width: 112 cm

Article no. 4378



**FRONT TRANSPORT  
WHEEL VK-GLOBAL**

/ adjustable height

Article no. 4381



**ASSEMBLY STAND  
SM-01**

/ easy change of loosening device

Article no. 4566



**SUPPORTING LEG  
ON-01**

/ intended for keeping the stability of the VARI minitractor after disconnecting the trailer

Article no. 3705



**SWING PLOUGH  
APH-352**

/ working width / ploughing depth: 18 cm / forged blade

Article no. 3611



**ONE-WAY PLOUGH  
APJ-018P RIGHT**

/ working width / ploughing depth: 18 cm / forged blade

Article no. 3612



**ONE-WAY PLOUGH  
APJ-018L LEFT**

/ working width / ploughing depth: 18 cm / forged blade

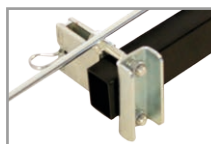
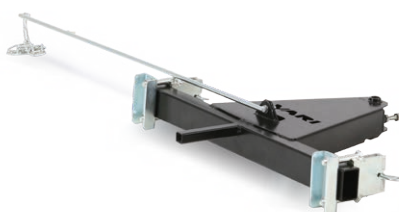
Article no. 3635



## CARRIER NM1-001

/ intended for gripping either two potato hillers or two passive hoes

Article no. 3608



**PLOUGHING WHEELS  
PK-GLOBAL**



**POTATO HILLER  
SV-1**



**2 SV-1 POTATO HILLERS  
+ NM1-001 CARRIER**



**POTATO PLANTER  
SB-40**



/ working width: 43 cm  
/ adjustable width

/ two-row hilling  
/ adjustable clamps  
(48 - 61 cm)

/ for up to 20 kg potatoes / adjustable covering discs  
/ wheel gauge: 61 cm

Article no. 4402

Article no. 3609

Article no. 4511

Article no. 4363



**PASSIVE HOE**



**2 PASSIVE HOES  
+ NM1-001 CARRIER**



**DIGGING SHARE  
AVR-453**



**DIGGING SHARE  
AVB-400**



**ADJUSTING ELEMENT  
NT-3**

/ to the NM1-001 potato hiller carrier (two hoes side by side) or to the N-3 share holder

/ two-row hoeing

/ for lighter soils  
/ working depth: 12 cm

/ for heavy soils  
/ working depth: 12 cm

/ for connection and adjustment of VARI passive implements

Article no. 3769

Article no. 4512

Article no. 3618

Article no. 3664

Article no. 3711



**COVER ASSEMBLY T-20**



**SHARE HOLDER WITH SHARE  
N-3**



**HITCH  
Z-01**



**COMPLETE HITCH  
BZN-002**

/ possible to mount to the DSK-317 gearboxes as well as to the older T-20 gearboxes

/ to the Z-01 hitch  
/ brakes the rotary tiller  
/ regulates the loosening depth

/ for connecting the ANV-380 and ANV-400 trailer, TK-01 third wheel and N-3 share holder with share

/ carrier, 33 kg weight, 2x 5 kg weight

Article no. 3744

Article no. 3716

Article no. 3704

Article no. 3710



**SMOOTHING HARROW  
S-1000**



**SPIKE-TOOTH HARROW  
BH-138**



**SPIKE-TOOTH HARROW  
ABR-354**



**CULTIVATOR WITH ROLLER  
K-720**



**CULTIVATOR  
AKY-356**

/ working width: 100 cm  
/ angle adjustment

/ three-row, swing  
/ working width: 90 - 138 cm

/ double-row, rigid  
/ working width: 49 - 117 cm

/ working width: 72 cm

/ working width: 70 cm

Article no. 3671

Article no. 3614

Article no. 3613

Article no. 3770

Article no. 3616



## Intended for other maintenance / DSK-317.1/S GEARBOX + ACCESSORIES

### DOZER BLADE ASR-1000

/ angled upper part for even better snow outlet  
/ working width: 100 cm / adjustable holder  
/ sprung blade

Article no. 4328



### PULLED AERATOR PT-1000

/ working width: 90 cm / 11 star-shaped blades with 121 points / wheels for transport

Article no. 4398



### IMPLEMENT CARRIER AV-3

/ loading capacity: 250 kg / sprung seat / service brake with lock / adjustable height of the hitch

Article no. 3791



### PULLED ROLLER VT-1000

/ working width: 100 cm / roller diameter: 32 cm  
/ weight: 49 kg / 130 kg / easy filling with water  
/ sprung seat

Article no. 4396

## Accessories for older gearboxes (till 2012) / FOR OWNER OF TERRA VARI



### GEARBOX DSK-317 4-STROKE / 2-STROKE ENGINES

/ number of speeds: 3 + R

Article no. 3421, 3411



### DRIVE AXLE TN-01

/ with the axle pin  
/ wheel size: 5.00 – 12"

Article no. 3706



### PLOUGHING WHEELS PK

/ with the axle pin

Article no. 4395



### PLOUGHING GIRDLES

/ wheel size: 5.00 – 12" with the MITAS tires

Article no. 3615



### LOOSENING DEVICE AKY-357/š95

/ for heavy soils  
/ working width: 95 cm

Article no. 4366



### LOOSENING DEVICE AKY-357

/ for heavy soils  
/ working width: 52 - 110 cm

Article no. 3718



### LOOSENING DEVICE AKY-358/š80

/ for lighter soils  
/ working width: 80 cm

Article no. 3746



### LOOSENING DEVICE AKY-358

/ for lighter soils  
/ working width: 25 - 115 cm

Article no. 3717





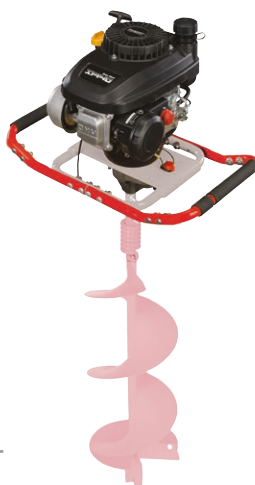
### VARI FM 3310, FM 3813 ELECTRIC LAWNMOWERS

- / electric lawnmowers suitable for the area up to 500 m<sup>2</sup>, 700 m<sup>2</sup>
- / working width of 31 cm, 37 cm
- / high-quality Direct Drive electric engine
- / collecting to grass bag, rear discharge, wheels on plain bearings
- / individual cutting height adjustment (3 positions)
- / collecting box and mower deck made of high-quality plastic
- / rear wheel diameter 170 mm, front wheels 140 mm
- / straight tilting handlebars
- / made in EU

TYPE	FM 3310	FM 3813
Engine	230V / 50 Hz / 1 000 W	230V / 50 Hz / 1 300 W
Working width	31 cm	37 cm
Cutting height	30 - 60 mm	30 - 60 mm
Bag volume	28 l	35 l
Weight	11,5 kg	14 kg
Article no.	3550	3551

## Boreholes for saplings, pickets, poles, etc. / PV-150 EARTH AUGER

NEW 22



### PV-150 EARTH AUGER

- / one-man easy usable professional earth auger
- / powerful VARI XP-140 engine – 141 cm<sup>3</sup>, 4 HP, steel cylinder sleeve
- / robust steel supporting frame
- / useful for gardening, forestry, building and landscaping
- / shaft prolongation enables to dig 150 mm deeper
- / optional adapters: 80, 100, 150 and 200 mm
- / exchangeable blades with double-sided edges

TYPE	PV-150
Engine	XP-140
Weight	17 kg
Article no.	4610

TYPE	SHAFT	80 MM	100 MM	150 MM	250 MM
Article no.	4615	4611	4612	4613	4614

## For safe wood preparation at home / SWIVEL LOG SAWS



### VARI KP-500, KP-700 SWIVEL LOG SAWS

- / heavy duty and compact construction
- / direct drive of the saw blade from the engine
- / hard metal saw blade
- / cradle returning using the spring



TYPE	KP-500	KP-700
Engine	230V / 50Hz / 3000W / IP54	400V / 50Hz / 5000W / IP54
Weight	57 kg	93 kg
Article no.	3681	3682

More information about  
VARI swivel log saws at [vari.cz/en](http://vari.cz/en)







**NEW 22**

- VARI CP1 484 G, VARI CP1 484 H PETROL LAWNMOWERS**
- / 4in1 lawnmower – mulching, collecting to grass bag, side and rear discharge
  - / central cutting height adjustment (6 positions)
  - / steel deck
  - / safety blade brake
  - / big wheels with ball bearing
  - / combined grass bag
  - / ergonomic handle, soft grip



**NEW 22**

- VARI MP1 504 G PETROL LAWNMOWER**
- / 4in1 lawnmower – mulching, collecting to grass bag, side and rear discharge
  - / central cutting height adjustment (5 positions)
  - / steel deck, hose connector for deck washing
  - / EVO gearbox for smooth start
  - / safety blade brake, big wheels with ball bearing
  - / combined grass bag, collector filling indicator
  - / De Luxe ergonomic handle
  - / easy access to the grass bag



**NEW 22**

**ELECTRIC START**

- VARI MP1 504 GES PETROL LAWNMOWER**
- / 4in1 lawnmower with electric start – mulching, collecting to grass bag, side and rear discharge
  - / central cutting height adjustment (5 positions)
  - / steel deck, hose connector for deck washing
  - / EVO gearbox for smooth start
  - / safety blade brake, big wheels with ball bearing
  - / combined grass bag, collector filling indicator
  - / De Luxe ergonomic handle
  - / easy access to the grass bag



- VARI MP1 554 H PETROL LAWNMOWER**
- / 4in1 lawnmower – mulching, collecting to grass bag, side and rear discharge
  - / VARIO-transmission with the continuous speed regulation
  - / central cutting height adjustment (6 positions)
  - / steel deck, hose connector for deck washing
  - / safety blade brake, big wheels with ball bearing
  - / combined grass bag
  - / collector filling indicator
  - / De Luxe ergonomic handle
  - / easy access to the grass bag

TYPE	CP1 484 G	CP1 484 H	MP1 504 G	MP1 504 GES	MP1 554 H
Engine	GGP LONCIN ST 140	HONDA GCV145	GGP LONCIN ST 170	GGP LONCIN ST 170 LS	HONDA GCV170
Working width	48 cm	48 cm	50 cm	50 cm	55 cm
Cutting height	22 - 80 mm	22 - 80 mm	25 - 65 mm	25 - 65 mm	25 - 85 mm
Bag volume	60 l	60 l	70 l	70 l	70 l
Weight	31 kg	30 kg	32 kg	33 kg	40 kg
Article no.	3565	4565	3566	3567	3694

More information about  
VARI petrol lawnmowers  
at [vari.cz/en](http://vari.cz/en)





## For cutting of larger turf areas / SINGLE-CYLINDER LAWN TRACTORS



### VARI RL 84 H LAWN TRACTOR

- / powerful GGP engine, displacement of 432 cm<sup>3</sup>
- / bevel double blade cutting device
- / hydrostatic gearbox
- / wide 15" and 18" wheels
- / robust supporting frame with a front bumper
- / cutting height adjustment (7 positions)
- / adjustable ergonomic and comfortable seat
- / perfect grass collection thanks to a short and direct discharge chute
- / electromagnetic cutting clutch
- / anti-scalp wheels of the cutting device
- / battery charger included

### VARI RL 98 H LAWN TRACTOR

- / powerful GGP engine, displacement of 452 cm<sup>3</sup>
- / bevel double blade cutting device
- / hydrostatic gearbox
- / wide 15" and 18" wheels
- / robust supporting frame with a front bumper
- / cutting height adjustment (7 positions)
- / adjustable ergonomic and comfortable seat
- / perfect grass collection thanks to a short and direct discharge chute
- / electromagnetic cutting clutch
- / anti-scalp wheels of the cutting device
- / battery charger included

TYPE	RL 84 H	RL 98 H
Engine	GGP LONCIN 7500	GGP LONCIN 7750
Displacement	432 cm <sup>3</sup>	452 cm <sup>3</sup>
Working width	84 cm	98 cm
Cutting height	25 - 80 mm	25 - 80 mm
Bag volume	240 l	240 l
Fuel tank volume	6 l	6 l
Weight	182 kg	202 kg
Article no.	3555	3556

More information about  
VARI lawn tractors  
at [vari.cz/en](http://vari.cz/en)





## For cutting of larger turf areas / DOUBLE-CYLINDER LAWN TRACTORS



**NEW 22**



### VARI RL 98 HW LAWN TRACTOR

- / powerful double-cylinder GGP engine, displacement of 586 cm<sup>3</sup>
- / bevel double blade cutting device
- / hydrostatic gearbox
- / wide 15" and 18" wheels
- / robust supporting frame with a front bumper
- / cutting height adjustment (7 positions)
- / adjustable ergonomic seat
- / perfect grass collection thanks to a short and direct discharge chute
- / electromagnetic cutting clutch
- / anti-scalp wheels of the cutting device
- / battery charger included

### VARI RL 102 H LAWN TRACTOR

- / powerful double-cylinder GGP engine, displacement of 586 cm<sup>3</sup>
- / synchronized double blade cutting device
- / hydrostatic gearbox
- / wide 15" and 18" wheels
- / robust supporting frame with a front bumper
- / cutting height adjustment (7 positions)
- / adjustable ergonomic seat
- / perfect grass collection thanks to a short and direct discharge chute
- / electromagnetic cutting clutch
- / anti-scalp wheels of the cutting device
- / battery charger included
- / mulching kit and hitch as a standard accessory

TYPE	RL 98 HW	RL 102 H
Engine	GGP LONCIN 550TWIN	GGP LONCIN 550TWIN
Displacement	586 cm <sup>3</sup> (double-cylinder)	586 cm <sup>3</sup> (double-cylinder)
Working width	98 cm	102 cm
Cutting height	25 - 80 mm	25 - 80 mm
Bag volume	240 l	260 l
Fuel tank volume	6 l	6 l
Weight	210 kg	235 kg
Article no.	3568	4590

More information about  
VARI lawn tractors  
at [vari.cz/en](http://vari.cz/en)







- / mulching without using the grass bag
- / two mulching blades
- / mulching plug to be put into the discharge chute

**TYPE** MULCHING KIT  
**RL 84 / RL 98**

Article no. **3559 / 3560**



- / for cutting grass without the grass bag
- / better guiding of the cut grass
- / prevents small stones from flying off

**TYPE** DEFLECTOR  
**RL 84, RL 98 / RL 102**

Article no. **3558 / 4598**



- / for connecting various accessories – trailers, aerators etc.

**TYPE** HITCH  
**RL 84, RL 98**

Article no. **3561**



- / intended for scarifying lawns in gardens or football fields
- / 11 star-shaped blades with 121 points
- / easy transport using the tilting wheels

**TYPE** PULLED AERATOR  
**PT-1000**

Article no. **4398**

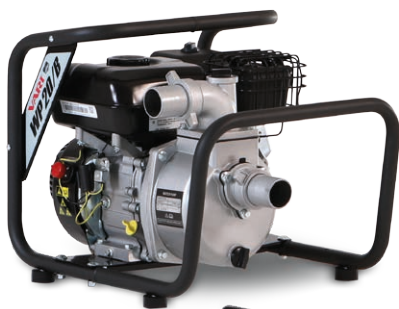


- / tipping body and rear side
- / grass design of tyres for grass protection
- / loading area dimensions 1 050 x 770 x 300 mm (l x w x h)

**TYPE** TIPPING TRAILER  
**NT 2**

Article no. **4528**





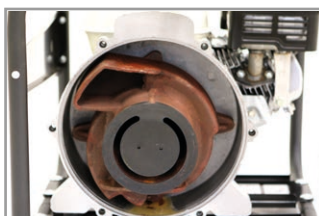
## VARI WP20/B WATER PUMP

- / for clean and slightly polluted water
- / suction head of 7 m
- / max. debris size capacity of 6 mm
- / connector diameter of 2"
- / 2 metal connectors, 2 sealings, 3 metal clamps and a plastic tube filter as standard accessories



## VARI FP20T HIGH PRESSURE WATER PUMP

- / for clean and slightly polluted water
- / suction head of 7 m
- / max. debris size capacity of 6 mm
- / connector diameter of 2"
- / 2 metal connectors, 2 sealings, 3 metal clamps and a plastic tube filter as standard accessories



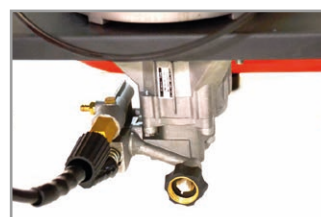
## VARI WP30D/H TRASH PUMP

- / for dirty and sludge water
- / suction head of 7 m
- / max. debris size capacity of 20 mm
- / connector diameter of 3"
- / 2 metal connectors, 2 sealings, 3 metal clamps and a plastic tube filter as standard accessories



## VARI W3000Z PRESSURE WASHER

- / for home usage and more demanding conditions of small companies or little farms
- / VARI XP-200A four-stroke engine
- / high-quality pump: duralumin, steel
- / three nozzles: 15°, 40°, soap nozzle
- / big transport wheels, handle



More information about pressure washer and accessories at [vari.cz/en](http://vari.cz/en)



TYPE	WP20/B	FP20T	WP30D/H
Engine	B&S CR750	HONDA GP200	HONDA GP200
Max. displacement	40 m	65 m	30 m
Flow rate	350 l/min.	500 l/min.	750 l/min.
Fuel tank volume	3,1 l	3,1 l	3,1 l
Weight	23 kg	24,8 kg	37,5 kg
Article no.	4560	4561	4562

TYPE	W3000Z
Engine power	6 HP
Max. pressure	2 900 PSI / 200 bar
Working pressure	2 300 PSI / 159 bar
Flow rate	8,5 l/min
Weight	26 kg
Article no.	3687





## VARI 5 TON HORIZONTAL LOG SPLITTER

- / suitable for preparing wood for fireplaces
- / handle and two transport wheels
- / safe both-handed operation
- / option: stand

TYPE	STAND
Article no.	4539



## VARI 8 TON 230 V, 400 V VERTICAL LOG SPLITTERS

- / system FORCE - reduces the splitting time period
- / robust construction
- / transport wheels and handle
- / safe both-handed operation
- / 4 l oil filling as a basic equipment
- / splitting cross and wide wedge included

## VARI 11 TON 230 V, 400 V VERTICAL LOG SPLITTERS

- / for more demanding usage
- / system FORCE - reduces the splitting time period
- / stable frame and robust construction, two working speeds
- / possible to decline the piston for easy transport and storage
- / phase convertor as a part of switch
- / transport wheels and the third wheel for easy transport
- / safe both-handed operation
- / option: splitting cross

## VARI 14 TON 400 V VERTICAL LOG SPLITTER

- / for more demanding usage
- / system FORCE - reduces the splitting time period
- / stable frame and robust construction, two working speeds
- / possible to decline the piston for easy transport and storage
- / phase convertor as a part of switch
- / full-rubber transport wheels and the third wheel for easier operation
- / safe both-handed operation
- / option: splitting cross

TYPE	5 TON SUPER FORCE	8 TON SUPER FORCE	8 TON SUPER FORCE	11 TON SUPER FORCE	11 TON SUPER FORCE	14 TON SUPER FORCE
Engine	230V / 50Hz / 2200W / IP54	230V / 50Hz / 3000W / IP54	400V / 50Hz / 3000W / IP54	230V / 50Hz / 3000W / IP54	400V / 50Hz / 3300W / IP54	400V / 50Hz / 3500W / IP54
Splitting force	5 t	8 t	8 t	11 t	11 t	14 t
Hydr. pressure	20,6 MPa	21 MPa	21 MPa	25,2 MPa	25,5 MPa	24,6 MPa
Log size	5 - 25 / 20 - 52 cm	8 - 30 / 10 - 55 cm	8 - 30 / 10 - 55 cm	10 - 30 / 56 - 104 cm	10 - 30 / 56 - 104 cm	10 - 30 / 56 - 104 cm
Weight	50 kg	110 kg	109 kg	173 kg	173 kg	185 kg
Article no.	4537	4513	4514	4558	4523	4524





#### VARI 18 TON VERTICAL LOG SPLITTER

- / professional log splitter
- / stable frame and robust construction
- / two working speeds
- / possible to decline the piston for easy transport and storage
- / phase convertor as a part of switch
- / option: splitting cross, winch

#### VARI 22 TON VERTICAL LOG SPLITTER

- / professional log splitter
- / possibility to transport on a three-point hitch, drive using the electric engine or the tractor cardan shaft
- / stable frame and robust construction
- / two working speeds
- / possible to decline the piston for easy transport and storage
- / phase convertor as a part of switch
- / option: splitting cross, winch

#### VARIMATIC 300 FIREWOOD PROCESSOR

- / horizontal hydraulic automatic splitting machine
- / simple and easy usage
- / processing with saw and splitter in one passage
- / 7 ton splitting force
- / process 5 – 8 m<sup>3</sup> of wood per hour
- / automatic chain lubrication
- / easy transport using the hitch

#### VARI 16 TON GAS FORCE PETROL LOG SPLITTER

- / vertical hydraulic professional petrol log splitter with a four-stroke engine - 196 cm<sup>3</sup>
- / 16 ton splitting force
- / two working speeds
- / log lift and safety frame
- / big wheels and a third transport wheel for an easier manipulation
- / safe both handed operation
- / option: splitting cross

TYPE	18 TON SUPER FORCE	22 TON SUPER FORCE	VARIMATIC 300	16 TON GAS FORCE
Engine - Splitter Engine - Saw	400V / 50Hz / 4500W / IP54	400V / 50Hz / 5100W / IP54	400V / 50Hz / 5000W / IP54 400V / 50Hz / 4000W / IP54	LONCIN 196 cm <sup>3</sup> , 6,5 HP
Splitting force	18 t	22 t	7 t	16 t
Hydr. pressure	27,8 MPa	27,5 MPa	17,8 MPa	24,9 MPa
Log size	8 - 32 / 56 - 110 cm	8 - 35 / 56 - 110 cm	30 / 55 cm	8 - 30 / 56 - 110 cm
Weight	262 kg	320 kg	353 kg	249 kg
Article no.	3703	4525	3686	4559

Your seller / Distributor:

VARI, a.s. on the basis of its inner provisions and continuous product innovations reserves the right to make changes in design and colours of the products listed in this catalogue, anytime and without prior notice, without extending the scope of its duties. It is forbidden to copy the documents and pictures in any form without consent of the publisher. Technical changes and printing errors reserved. Published by VARI, a.s.