



WELCOME **THE FUTURE** NOW

**VARI**  
POWERED BY **EGO**

# BATTERY-POWERED BRUSH SWEEPER

ergonomic intuitive controls

powerful 56 V AC battery engine with control electronics equipped with **PEAK POWER™** technology

**PEAK**  
POWER  
TECHNOLOGY



pressure of bristles continuously adjusted using the support wheel

adjustment of sweeping cylinders in 5 positions

brush adjustment from the operator's position

height adjustable handlebars in 6 positions

2 travel speeds

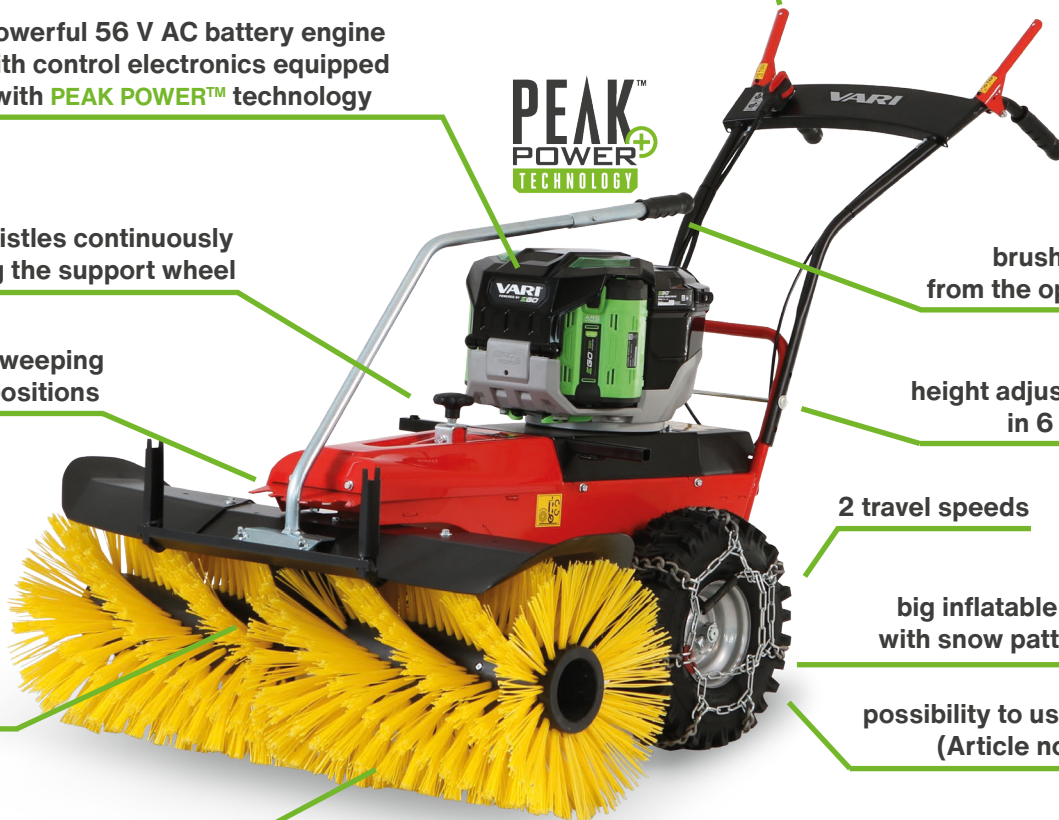
big inflatable wheels with snow pattern tyres

possibility to use snow chains (Article no. 4594)

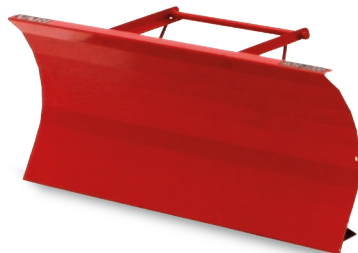
duralumin worm gearbox

spiral arrangement of bristles

working width of 80 / 100 cm



SINCE  
**1969**  
VARI

**SNOW  
BLADE****OR-80****ROR-1000****Working width** 80 cm 100 cm**Article no.** 4451 4519**COLLECTING  
BOX****BS-80****BS-100****Working width** 80 cm 100 cm**Article no.** 4445 4458**DUST  
COVER****AP-80****AP-100****Working width** 80 cm 100 cm**Article no.** 4443 4597**BRUSH SWEEPER****CB-800E****CB-1000E****Engine** EGO PU2700 EGO PU2700**Recommended batteries** 2x 7,5 Ah or 2x 10 Ah or 2x 12 Ah**Working width** 80 cm 100 cm**Weight (without batteries)** 71 kg 75 kg**Machine dimensions (l x w x h)** 164 x 80 x 115 cm 164 x 100 x 115 cm**Article no.** 4627 4628**APPROXIMATE RUN TIME OF THE MACHINE****2x 7,5 Ah**   = **40 min****2x 10 Ah**   = **55 min****2x 12 Ah**   = **75 min**

\* measured at an outdoor temperature of 20 °C



# BATTERY-POWERED MULTIFUNCTIONAL DRUM MOWER

ergonomic intuitive controls

powerful 56 V AC battery engine with control electronics equipped with **PEAK POWER™** technology

**PEAK**<sup>™</sup>  
**POWER**<sup>+</sup>  
TECHNOLOGY

centrifugal clutch for starting the cutting drum

4 blades, working width of 62,2 cm

HDG red painted asymmetric cover of the cutting disc

height adjustable handlebars in 6 positions

fixed drive axle perfectly keeps the direction even on slopes

2 travel speeds

additional safety cover (BDR-620DE)

double cutting drum with T-Bar bracing of the blades



SINCE  
**1969**  
VARI

**MULCHER VM-580**

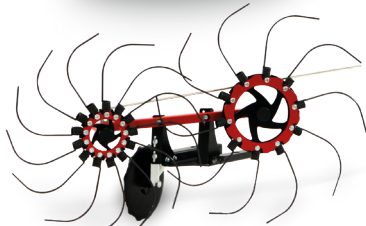
Working width 58 cm

Art. no. 4429

**HAY RAKE SH-600**

Working width 60 cm

Art. no. 4517

**BRUSH PK-950**

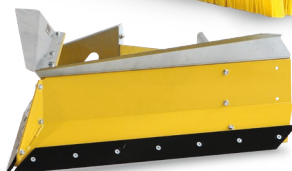
Working width 95 cm

Art. no. 4459

**BLADE SP-800**

Working width 79 cm

Art. no. 4450

**DRUM MOWER****BDR-620E  
LUCINA MAX****BDR-620DE  
LUCINA MAX**

Engine	EGO PU2700	EGO PU2700
Recommended batteries	2x 7,5 Ah or 2x 10 Ah or 2x 12 Ah	
Working width	62,2 cm	62,2 cm
Weight (without batteries)	61 kg	66 kg
Machine dimensions (l x w x h)	175 x 76 x 115 cm	175 x 78 x 115 cm
Article no.	4630	4649

**APPROXIMATE RUN TIME OF THE MACHINE**2x **7,5 Ah**   = 40 min2x **10 Ah**   = 50 min2x **12 Ah**   = 60 min

\* measured at an outdoor temperature of 20 °C

# BATTERY-POWERED SINGLE-PURPOSE MULCHER FOR LONG GRASS



ergonomic intuitive controls

powerful 56 V AC battery engine  
with control electronics equipped  
with **PEAK POWER™** technology

**PEAK**  
POWER  
TECHNOLOGY

height adjustable handlebars  
in 6 positions

fixed drive axle perfectly keeps  
the direction even on slopes

2 travel speeds

HDG cover of the cutting space

patented front spur

working width of 58 cm

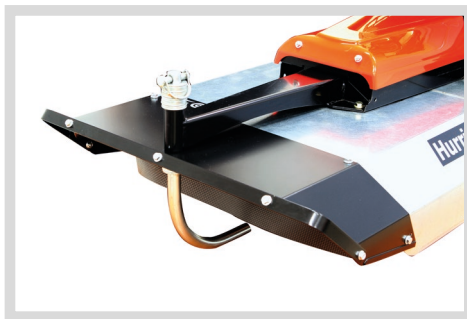
Gator mulching blade



SINCE  
**1969**  
VARI

## MULCHER FRONT COVER

Art. no. 4447



It is enough to mulch  
3 – 4 times a year

The grass does not need  
to be raked, on the contrary,  
it remains lying on the stubble  
and acts as a green manure.



## MULCHER

## F-580E HURRICANE

Engine	EGO PU2700
Recommended batteries	2x 7,5 Ah or 2x 10 Ah or 2x 12 Ah
Working width	58 cm
Weight (without batteries)	57 kg
Machine dimensions (l x w x h)	184 x 58 x 112 cm
Article no.	4642

### APPROXIMATE RUN TIME OF MACHINE IN DIFFICULT CONDITIONS

2x **7,5 Ah**   = 20 min

2x **10 Ah**   = 30 min

2x **12 Ah**   = 40 min

\* measured at an outdoor temperature of 20 °C

\*\* tested in a dense grass incl. invasive plants, length of 80 cm,  
at first gear



# BATTERY-POWERED GARDEN WOOD CHIPPER

diameter of crushed material  
up to 60 mm



powerful 56 V AC battery engine  
with control electronics equipped  
with **PEAK POWER™** technology



self-feeding of the crushed material  
into the crushing head

double-threaded spiral blade

telescopic handle

safety switch

steel flywheel

space for placing the eurobox  
(60 x 40 x 27 cm)

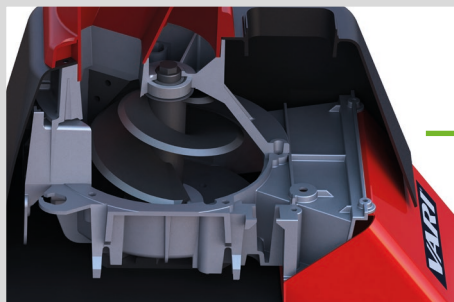
robust multi ribbed V-belt  
of the crushing head

transport wheels



SINCE  
**1969**  
VARI





Double-threaded  
spiral blade –  
**RAPIDO**  
patented  
design



Wood chips  
are perfect  
as a mulch layer  
or fuel

## WOOD CHIPPER

## E.RAPIDO

Engine	EGO PU2700E
Recommended batteries	2x 7,5 Ah or 2x 10 Ah or 2x 12 Ah
Max. diameter of crushed material	60 mm
Size of wood chips	c. 20 mm
Weight (without batteries)	60 kg
Machine dimensions (l x w x h)	96 x 52 x 134 cm
Article no.	4631



## APPROXIMATE RUN TIME OF THE MACHINE

2x **7,5 Ah**   = 50 min

2x **10 Ah**   = 75 min

2x **12 Ah**   = 90 min

\* measured at an outdoor temperature of 20 °C

\*\* depends on machine load

# BATTERY-POWERED PRESSURE WASHER

powerful 56 V AC battery engine  
with control electronics equipped  
with **PEAK POWER™** technology



max. pressure of 180 bar

high quality pump – duralumin, steel

three nozzles:  
15°, 40°, foam nozzle

professional spray gun  
and accessories

easy storage – the frame  
can be divided into 2 parts

possibility to suck in a detergent

big transport wheels



### TURBO NOZZLE WITH A COUPLER

3 600 PSI (250 bar)

SA000-TN3600



### SET FOR SAND-BLASTING

sand with a grain size  
of max. 2 mm

SA000-SB002



### DRAINPIPE ADAPTER

30 cm, 1/4"

SA000-GCM22P



### FROTHING ADAPTER WITH A BIN

Volume of 1 l

SP000-FL002



### STAINLESS- STEEL ADAPTER

83 cm, 1/4"  
53 cm, 1/4"

SA000-ALT02P,  
SS000-EW001



### PRESSURE WASHER

W3000E

Engine	EGO PU2700E
Recommended batteries	2x 7,5 Ah or 2x 10 Ah or 2x 12 Ah
Max. pressure	2610 PSI / 180 bar
Weight (without batteries)	28 kg
Machine dimensions (l x w x h)	73 x 51 x 98 cm
Article no.	4632



### APPROXIMATE RUN TIME OF THE MACHINE

2x **7,5 Ah**   = 20 min

2x **10 Ah**   = 25 min

2x **12 Ah**   = 35 min

\* measured at an outdoor temperature of 20 °C

**VARI**<sup>®</sup> + **EGO**<sup>™</sup> = **VARI**<sup>®</sup>  
POWER BEYOND BELIEF<sup>™</sup> POWERED BY **EGO**<sup>™</sup>

- / traditional manufacturer and supplier of garden machinery since 1969
- / specialist in drum mowers, mulchers, brush sweepers, multifunctional carriers and minitractors for year-round work
- / machines for municipalities

- / patented ARC-shaped EGO batteries
- / 56 V technology
- / 1P, 2P, 3P and 4P batteries with the capacity from 2,5 Ah up to 12 Ah
- / powerful battery engine
- / wide range of battery-powered equipment

- / combination of tradition and technology
- / elegant transition to the battery age
- / fully replaces the engine category of 5 HP
- / 100% battery compatibility with EGO machines
- / zero emissions, lower service costs
- / manufactured in EU



VARISTROJE



VARlcz



VARlcz

[www.vari.cz/en](http://www.vari.cz/en)

Your seller / Distributor:

Technical changes and printing errors reserved.  
Published by VARI, a.s.



Co-funded by  
the European Union

